



*Bachelor of Science in Retail Management*  
*Entering Class 2009*  
*Updated September 2012*

## ECTS Grading at SSE

The Stockholm School of Economics changed its grading system in conjunction with the transformation to the Bologna Model in 2007. The main components of the new ECTS grading system includes ECTS credits: 1.5 credits for one full week of studies equal to 60 credits for a full academic year, and five passing ECTS grades: A, B, C, D, E, and F for fail.

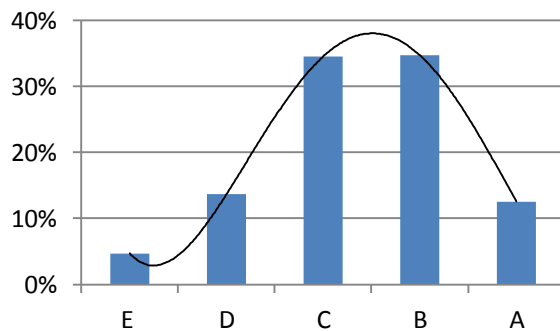
A grade point average (GPA) is calculated as follows: A = 5.0 points, B = 4.0, C = 3.0, D = 2.0, E = 1.0. Thus, the GPA for a student can range from 1.0 – 5.0, with 5.0 being the highest.

To assess the grade performance of an SSE student, one can compare his/her letter grades and individual GPA to the Class GPA of all courses offered to the whole cohort, and to the distribution of grades of all courses offered during the entirety of the program (see below).

Information on grades is updated each year in September, and is available on the SSE website ([www.hhs.se](http://www.hhs.se)).

**ENTERING CLASS 2009**  
**CLASS GPA: 3.37**

**BSc in Retail Management**  
**Entering Class 2009**  
**Grade distribution all courses 2009-2012**



Stockholm in September, 2012

Associate Professor Per-Olov Edlund  
Academic Controller at SSE