

# MSc

MASTER OF SCIENCE PROGRAMS

## EMPLOYMENT REPORT 2024



# INTRODUCTION

As we navigate today's rapidly evolving world, we face unprecedented challenges and opportunities across the global landscape, influenced by technological advancements, economic shifts, and societal changes. These developments demand that we, as alumni, adapt, innovate, and lead with the skills we've gained during our academic and professional journeys. Our capacity to apply these skills to new problems, to think critically, and to collaborate across cultures is more crucial than ever.

Reflecting on my time at the Stockholm School of Economics, I cherish not only the rigorous academic training but also the nurturing environment that equipped me for challenges beyond the classroom. The school served as a crucible for developing both technical knowledge and essential soft skills such as leadership, teamwork, and moral judgment. These skills have been indispensable throughout my career. Since graduating,

I've embraced roles that have maximized my potential and passion: I've worked at multinational corporations, as well as started EsterCare – a mission-driven company dedicated to increasing gender equality in our society.



**Lydia Graf Lund**, Co-Founder and CEO of the femtech company EsterCare

The perspectives I've gained from these different roles have enabled me to both develop my strategic thinking and personal development, allowing me to understand in what context my passions and skills will make the best contribution to the world.

SSE graduates are highly valued in the job market. The combination of practical, hands-on learning experiences and a solid theoretical foundation ensures that both Bachelor and Master students are not only prepared to tackle current professional challenges, but are also well-equipped to shape the future.

The personal attention each student receives at the Stockholm School of Economics truly transforms the educational experience. Faculty members know us by name, recognizing each student as an individual with unique talents and potential. This approach boosts motivation and engagement, enriching both our academic and personal growth. As an alum, I strive to carry forward this legacy of personal attention, continuously working to forge meaningful connections in my professional and personal life, and underscoring the lifelong impact of our alma mater.

# GRADUATE PROFILE

In 2023, 369 alumni graduated from SSE's Master programs. They included 50 percent women and 50 percent men. The median age at graduation was 26. Forty-nine nationalities were represented, including Swedish (some of these were Swedish alumni with dual citizenship).



## NATIONALITIES REPRESENTED IN THE MASTER COHORT THAT GRADUATED IN 2023

American, Australian, Austrian, Belarusian, Bulgarian, British, Canadian, Chinese, Czech, Croatian, Cypriot, Danish, Dutch, Estonian, Finnish, French, Filipino, German, Hungarian, Indian, Indonesian, Irish, Italian, Japanese, Latvian, Lithuanian, Mexican, Moldovan, Moroccan, New Zealander, Nigerian, Norwegian, Polish, Portuguese, Romanian, Russian, Serbian, Slovakian, Spanish, Swedish, Swiss, Syrian, Taiwanese, Thai, Tunisian, Turkish, Ukrainian, Uruguayan, Vietnamese

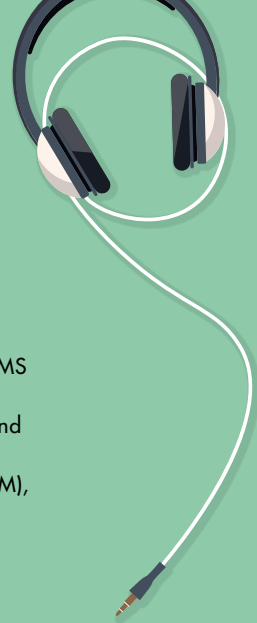
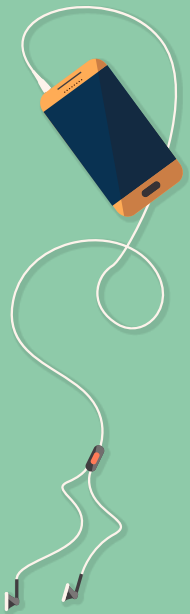
# EMBRACE YOUR UNIQUENESS

## AT SSE, YOU CAN CREATE A CURRICULUM THAT NURTURES YOUR INDIVIDUAL NEEDS

SSE's Master students have various opportunities to enhance their education and gain valuable experiences. In addition to studying at one of SSE's partner schools, enrolling in a double degree program or joining the CEMS community, students can follow a track in sustainability or data analytics. They also have the option to select elective courses related to innovation at the Stockholm School of Entrepreneurship, take online electives or attend seminars at other European higher education institutions through CIVICA, or online electives at other leading global business schools through GNAM. Furthermore, students can engage in the Executive Trainee Module (XTM), in which case they will work closely with an executive manager at one of SSE's partner companies. Another option is to participate in the Wallenberg International Fellows Program, which allows students to combine their MSc studies at SSE with a summer internship in the United States, along with international business diplomacy studies in the Landegger Program at Georgetown University.



Scan the QR code  
to read more about  
all MSc program  
components  
in year 2.



# SSE'S MSc MENTORSHIP PROGRAM

The MSc Mentorship Program is a unique program that helps our Master students with the transition to professional life by connecting them with SSE alumni and SSE corporate partners. Every year, the program pairs students with mentors who are thriving in their fields, giving their time and sharing their experiences to inspire the next generation of leaders. The program spans one academic year, during which students and mentors work together to explore career paths, share insights into workplace culture, and build the students' professional networks.



211

of our 2023 MSc graduates took part  
in the MSc Mentorship Program.

# WHAT OUR MENTORS/MENTEES THINK ABOUT THE MSc MENTORSHIP PROGRAM

“The most rewarding aspect of mentoring is the reminder of how much we often take for granted. The MSc Mentorship Program allows me to see the world through fresh eyes again and reminds me that all skills are attainable with time and guidance. Mentoring a student is a purposeful endeavour that involves more than just providing guidance—it’s about genuinely engaging in someone’s growth and witnessing them discover their path.”

**Tania Johannisson**

Mentor

Founder & Managing Director  
at Amplific



“The MSc Mentorship Program offers a fantastic opportunity to connect with someone you might not encounter otherwise. This offered me new perspectives and a broader understanding of the area that I’m interested in but know little about. The best part of having a mentor is definitely having someone who can guide and support you while helping you learn from their career experience, including both learnings and mistakes.”

**Catherine Dolt**

Mentee

MSc student in International Business



# MSc ALUMNI WHO WENT ON EXCHANGE

SSE runs an extensive student exchange program with about 100 top-ranked universities and business schools worldwide. SSE is also a member of prominent networks such as PIM (Partnership in International Management), CEMS (The Global Alliance in Management Education), GNAM (Global Network for Advanced Management), and CIVICA, and it participates in the Erasmus+ program.



A total of 173 of our 2023 MSc graduates studied abroad for one semester (excluding those who enrolled in a double degree program).

Read more  
about the student  
exchange program.



# MSc ALUMNI WITH A DOUBLE DEGREE

We have joined forces with some of the very best European business schools and offer exciting double degree programs with the University of St Gallen, Bocconi University and Sciences Po (the Paris School of International Affairs and the School of Management and Innovation) on the Master level.

The combined strengths of the partner university and SSE enhance the academic experience and equip students with international experience and perspectives that help prepare them for successful careers, whether in business, government or academia.

Graduates of a double degree program receive two degrees, one from each higher education institution, which give them an edge in the increasingly integrated European labor market.



20

Twenty of our 2023 MSc graduates were enrolled in one of the double degree programs and were awarded with two Master's degrees.



# MSc ALUMNI WITH AN ADDITIONAL CEMS MIM DEGREE

The CEMS Master in International Management (MIM) is a joint Master program offered by a global alliance of leading business schools, multinational companies and NGOs that have come together to offer one of the top-ranked Master programs in management globally. The CEMS MIM is a compelling choice for those seeking a truly versatile and geographically mobile international career, as the joint curriculum is co-created and refined by faculty academic directors from 33 member schools, with input from its 70+ CEMS corporate partners, eight social partners, as well as CEMS students and alumni. SSE is the only school in Sweden that is a member of CEMS and has one of the largest student cohorts among CEMS schools.

The CEMS MIM program consists of mandatory elements, such as an initial one-week Block Seminar, courses in international business, a Business Project, an academic semester abroad, Skill Seminars and language requirements. Upon completing the program, students will be awarded with both the CEMS MIM degree and a Master of Science degree from SSE.

65

Sixty-five of our 2023 MSc graduates also obtained a Master's degree from CEMS. Out of these fifty-one had studied the MSc program in International Business.



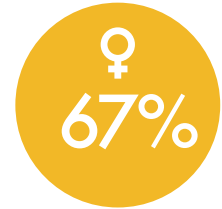
# SSE BUSINESS LAB

## A WORLD-CLASS STARTUP INCUBATOR



#1 track record in Europe according to the Financial Times

Since its inception in 2001, SSE Business Lab has supported over 300 companies – among them well-known successes like Klarna, Budbee and Voi Technology. The Financial Times ranks SSE Business Lab as the startup incubator with the best track record in Europe, in addition to being the #1 incubator in Sweden.



Of the teams admitted in 2023, 67% had at least one female co-founder

SSE Business Lab is an integrated part of the School that encourages entrepreneurship among students, alumni and faculty and provides early-stage support for companies that have at least one co-founder with a connection to SSE. Through coaching, mentorship, workshops, and access to a first-class network of investors, SSE Business Lab helps startups develop their ideas, accelerate their growth, and create impact.



SEK 31 million raised by the startups

SSE Business Lab offers support to entrepreneurs and startups through three programs: IDEATE; an inspirational program for students at SSE and KTH who are interested in building sustainable businesses, ACTIVATE; an intensive program for teams seeking to validate their business idea, and INCUBATE; a six-to-18-month long incubation program for startups with a scalable product or service and international business potential.



Of the capital raised, 50% went to startups with female CEOs

# ABOUT LAMIN K. DARBOE AND BANTABA

Lamin Darboe is originally from Gambia in West Africa and did his MSc in Finance at SSE. Prior to enrolling at SSE, he received his Bachelor's degree from Bocconi University in Italy. In 2021, he co-founded Bantaba, a startup that seeks to contribute to the development in Africa by supporting entrepreneurs addressing important challenges on the continent. Bantaba received support from SSE Business Lab, first in the Activate program for early-stage ideas, and later in the Incubate program for startups scaling their business idea.

Bantaba connects African tech startups to investors, mentors and consultants in the African diaspora. The platform allows the diaspora to contribute to Africa's tech ecosystem through networking, mentoring, and investing in startups on the continent.



"The team at SSE Business Lab has been nothing short of incredible, being our number 1 supporter. They have always gone the extra mile to support our journey, providing access to business coaches, mentors, and investors as well as giving feedback, recommendations and tips. Over the past years, we have been able to build and grow as a company thanks to the lab's resources."



**Lamin Darboe**  
Co-founder of Bantaba, Gambia

# GRADUATES WERE HIRED QUICKLY

In the spring of 2024, the 369 alumni who graduated from SSE's Master programs in 2023 were surveyed about their whereabouts, employment situation and remuneration. Out of those invited, 298 alumni responded to the survey. Their answers are summarized on the following pages. Please note that not every respondent completed every question. To calculate the percentage values, we have used the number of usable responses to each question as the total. Likewise, when we refer to "alumni" on the following pages, we refer to the group of alumni who answered the respective survey question and not the entire cohort that graduated in 2023. Information on company sectors was reviewed by the project team and standardized based on the Financial Times grouping.

96%

In total, 96 percent found their employment within three months of completing their studies. The remaining four percent include alumni who chose not to look for a job immediately after graduation.

71%

Of those who found employment within three months of completing their studies, 71 percent found positions before they completed their studies.

## ANNUAL REMUNERATION

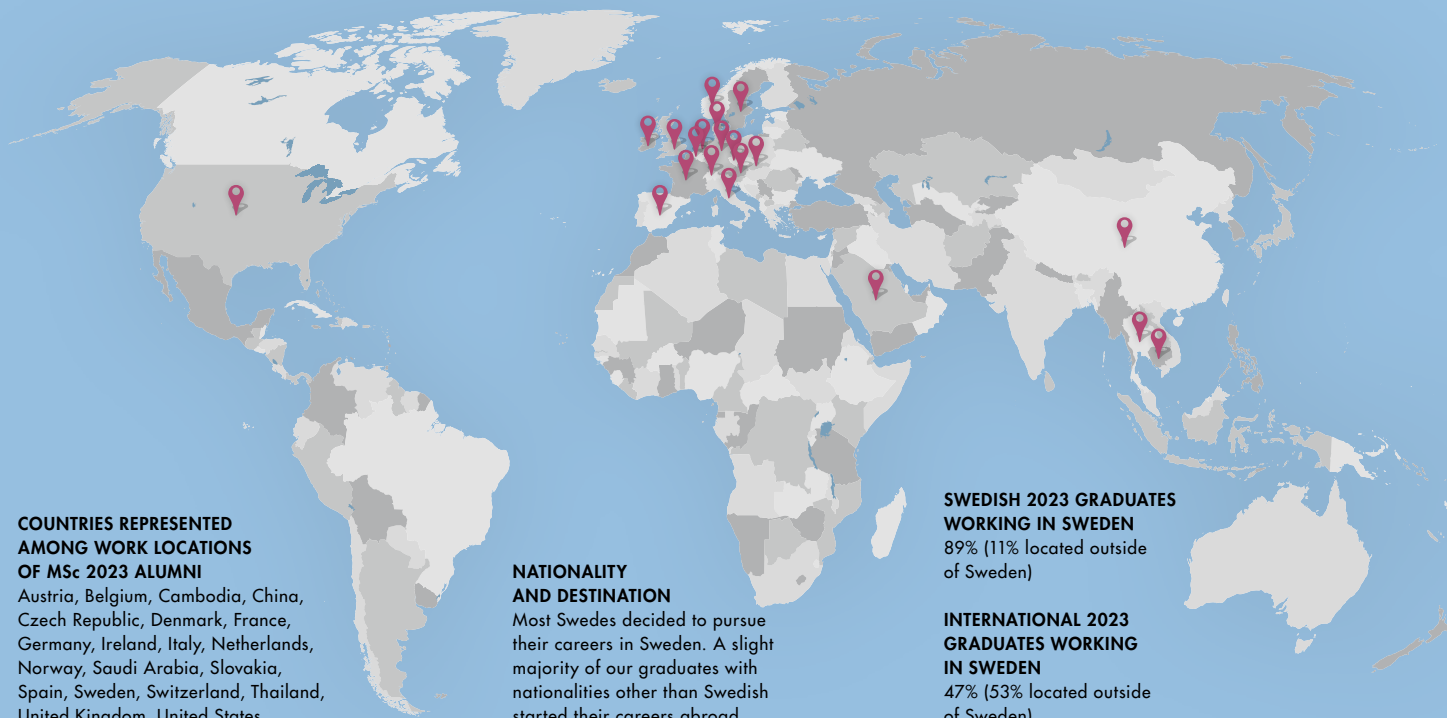
One year after completing their studies, employed alumni\* earned an average annual gross remuneration of USD 63,636 or SEK 660,272. This figure includes bonuses and commissions.



\*Salary information was reported by alumni in USD. USD was converted to SEK at the Riksbank's exchange rate on June 7, 2024; USD 1 = SEK 10.37576. Outliers were excluded from this analysis.

# ALUMNI WORKING ALL OVER THE WORLD

Sweden, Germany, the United Kingdom, and Switzerland were the most popular employment destinations. While 11% of Swedish alumni work outside of Sweden, 47% of non-Swedish alumni are employed in Sweden.



## COUNTRIES REPRESENTED AMONG WORK LOCATIONS OF MSc 2023 ALUMNI

Austria, Belgium, Cambodia, China, Czech Republic, Denmark, France, Germany, Ireland, Italy, Netherlands, Norway, Saudi Arabia, Slovakia, Spain, Sweden, Switzerland, Thailand, United Kingdom, United States.

## NATIONALITY AND DESTINATION

Most Swedes decided to pursue their careers in Sweden. A slight majority of our graduates with nationalities other than Swedish started their careers abroad.

## SWEDISH 2023 GRADUATES WORKING IN SWEDEN

89% (11% located outside of Sweden)

## INTERNATIONAL 2023 GRADUATES WORKING IN SWEDEN

47% (53% located outside of Sweden)

# FIRST EMPLOYERS AFTER GRADUATION

47% (122) OF THE EMPLOYED MSc ALUMNI ARE WORKING IN  
SSE'S AND CEMS' CORPORATE PARTNER COMPANIES



ACCENTURE  
AMPLIFON S.P.A.  
ATLAS COPCO  
BAIN & COMPANY\*  
BANK OF AMERICA  
BNP PARIBAS\*  
BCG\*  
CAPGEMINI INVENT  
CARNEGIE  
CITIBANK

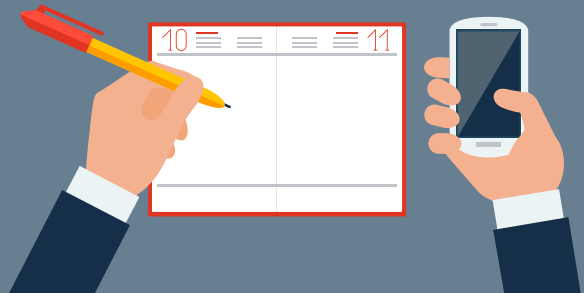
DELOITTE\*  
EF EDUCATION FIRST  
E.ON INHOUSE  
CONSULTING  
EQT  
ERICSSON  
EY  
FIDELIO CAPITAL  
GARTNER  
GOLDMAN SACHS  
GOOGLE

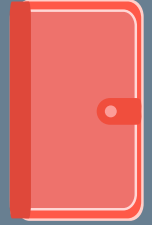
H&M\*  
HANDELSBANKEN  
INVESTOR AB  
KEARNEY  
KINNEVIK  
KPMG  
LAZARD  
LUFTHANSA GROUP  
MCKINSEY & COMPANY\*  
NORDEA

OLIVER WYMAN  
PWC  
ROTHSCHILD & CO  
SCANIA  
SEB  
SWEDBANK  
UBS  
VINGE  
ZEB  
ZURICH INSURANCE  
GROUP



\*Both SSE & CEMS Corporate Partners





## EXAMPLES OF OTHER EMPLOYERS

---

ALLSHARES

ARTHUR D. LITTLE

AXCEL

DNB

DANSKE BANK

H2 GREEN STEEL

IMPLEMENT CONSULTING GROUP

J.P. MORGAN

LYNXEYE

OPTIO INVESTMENT PARTNERS

OPX PARTNERS

ROLAND BERGER

SANA LABS

STRATEGY&

TELIA

UNILEVER



# CHOICE OF SECTOR

The companies that employed our graduates belonged to the following sectors:



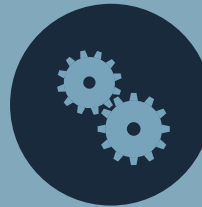
45% Consultancy



30% Finance



7% Technology/  
Telecoms



4% Industrial



3% Public Sector



3% Retail



1% Consumer Products



1% Energy/Utilities



1% Media/Marketing



1% Non-profit  
Organizations



1% Education



3% Other

Apart from those who got employed, 3% of the respondents reported that they continued studying after their MSc program.



# PROGRAM PORTFOLIO

## MASTER OF SCIENCE PROGRAMS

<b>MASTER OF SCIENCE PROGRAMS (2 YEARS)</b>	Accounting, Valuation & Financial Management
	Business & Management
	Economics
	Finance
	International Business

## PROGRAMS OFFERED AT SSE

<b>BACHELOR OF SCIENCE PROGRAMS (3 YEARS)</b>	Business & Economics
	Retail Management

## MASTER OF SCIENCE PROGRAMS

<b>PhD PROGRAMS (5 YEARS)</b>	Business Administration
	Economics
	Finance

**MBA EXECUTIVE FORMAT (18 MONTHS)**

**EXECUTIVE EDUCATION**

# WHAT EMPLOYERS THINK

"We are proud of our close partnership with SSE. In our search for exceptional talent, SSE students continue to be distinctive. They exhibit high levels of drive and engagement, qualities that are crucial in our work to solve some of the world's most complex problems. We have decades of history of learning, growing, and unleashing our potential together."

**Sebastian Sjöberg**  
Managing Partner and Senior  
Partner at McKinsey – Sweden

McKinsey  
& Company

"SEB continues to prioritize being a Corporate Partner with Stockholm School of Economics because we believe our long-term relationship brings together some of the brightest minds to help solve the challenges of the future. From finance to entrepreneurship, from diversity to sustainability, we believe there is great value in engaging with Stockholm School of Economics students and educators on topics that will positively impact our society today and for generations to come."

**Johan Torgeby**  
CEO at SEB

SEB

"We are recruiting from SSE simply because it's the perfect match. We are getting access to hard working, curious and creative students of world class, and in return we offer them a truly global platform to develop their skill set and accelerate their careers as working professionals."

**Per Hillström**  
Managing Director at Morgan Stanley

Morgan Stanley

# WHAT ALUMNI THINK

"The program at SSE gave me a solid foundation of economic knowledge that I benefit from everyday in my work. Also, the degree opened doors for me. Even in the Netherlands, many of the people in my field are familiar with SSE and the quality it provides."

**Jan Litjens**

Personal Adviser to the Minister for Climate and Energy of the Netherlands



"SSE has a crazy high concentration of exceptionally ambitious and driven people. Although it sounds super cliché, that environment helped me to quickly pick up on different career tracks and how they could be pursued. But perhaps more importantly, SSE provided me with the opportunity to really nerd out on and become skilled in the subject areas that I enjoyed the most."

**Astrid Lindquist**

Investment Associate at Summa Equity



"SSE helped me immensely in guiding me in my career so far. While I believe the numerous corporate events are greatly beneficial for students to get an idea of how it is working for a certain organization, it was the time spent actively reflecting on what you really want to do in your life, which helped me find my way."

**Timo Maronna**

Senior Consultant at McKinsey & Company



# STOCKHOLM SCHOOL OF ECONOMICS

---

SSE is one of Europe's leading business schools, with a unique business-community network. Its research is internationally recognized, and many of its researchers are among the leading figures in their respective fields.

SSE's mission dates back to 1909, and it is to strengthen Sweden's competitiveness through research and science-based education. To execute this mission, SSE operates with core values that ultimately prepare decision makers, today and in the future, for approaching the world with curiosity and confidence and acting freely in relation to the unknown. In practice, SSE's operations embody a Fact and science-based mindset, Reflection and self-awareness, Empathy and cultural literacy, and Entrepreneurship. In a word, SSE aims to be a FREE Business School and as such impactful for all of its stakeholders, locally, nationally, and globally.



Stockholm School of Economics · Box 6501 · SE-113 83 Stockholm, Sweden  
Phone: +46 8 736 90 00 · [info@hhs.se](mailto:info@hhs.se) · [www.hhs.se](http://www.hhs.se)