

BSc

BACHELOR OF SCIENCE PROGRAMS

EMPLOYMENT REPORT 2020



INTRODUCTION

The fourth industrial revolution, or “Industry 4.0”, in which digitalization and globalization are nurturing change at a pace never previously seen, requires specialist skills to be supplemented by holistic insights and a capacity for adaptation. These will be key success factors for anyone in the professional world in the 2020s and onward. Additionally, innovative solutions to complex challenges will come from close teamwork across different areas of expertise, telling us that relationship building is another key skill.

As corporate partner to SSE, Deloitte is involved in several activities, most prominently the *SSE Business Lab*, where a few chosen start-ups get our advice on running a business, and the *Finance Transformation Lab*, where students work on a case in shaping the finance function of the future. Constant collaboration with corporate partners, state-of-the-art program content and the recent establishment of Global Challenges, underpins the clear ambition to have students apply their knowledge in practice and prepare them for the requirements faced when embarking on their professional journeys.

Graduates from SSE are strong representatives of the Millennial generation, with high expectations of their future employers’ ability to offer a challenging and rewarding career, while, to an equivalent extent, expecting no compromise in areas such as ethics and sustainability. Their education from SSE, high level of ambition and strong will to make substantial investments in their careers, will make them extraordinarily well prepared to contribute to organizations in the era of Industry 4.0.

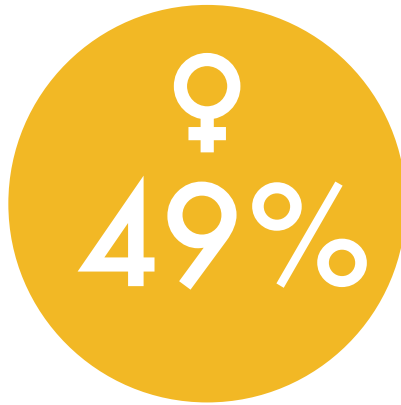


Anna Pontén

Partner, Human Resources and Talent, Deloitte

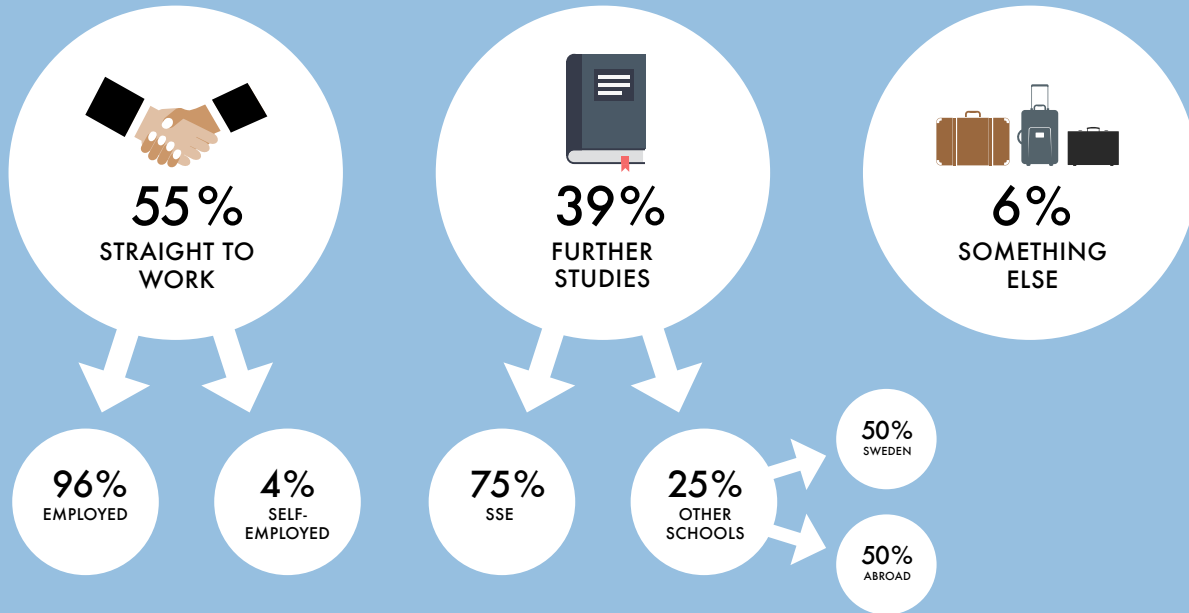
GRADUATE PROFILE

In 2019, 284 students graduated from SSE's Bachelor programs. They included 51 percent men and 49 percent women. The median age at graduation was 23 (ranging from 21 to 34). Ten nationalities were represented.



WHAT COMES NEXT

55 percent of the 2019 graduates from the SSE's Bachelor programs began their careers after finishing their degree.
39 percent decided to continue their studies.



GRADUATES HIRED QUICKLY

95%

95 percent found employment within three months of completing their studies.*

80 percent found positions before they completed their studies.

*The remaining 5 percent include those who chose not to look for a job immediately after graduation.

AVERAGE SALARY

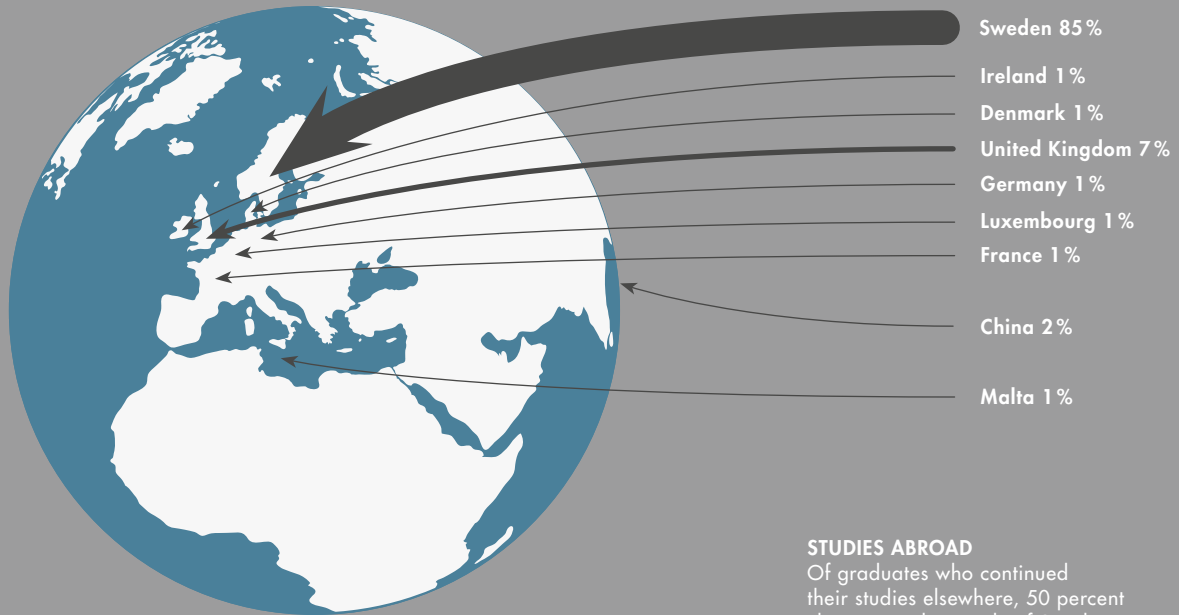
The average annual salary for Bachelor graduates one year after completing their studies was 463 986 SEK* (48 074 USD).



*The SEK/USD exchange rate used is from the International Monetary Fund USD/SEK = 9.6515 (avg. rate 2019/2020).

GRADUATES' DESTINATIONS

For SSE Bachelor graduates, Sweden and the United Kingdom were the most popular employment destinations. 13 percent of the graduates started their first job outside of Sweden.



STUDIES ABROAD

Of graduates who continued their studies elsewhere, 50 percent chose to study outside of Sweden.

FIRST-TIME EMPLOYERS

31 PERCENT OF BSC 2019 ALUMNI ARE WORKING IN SSE'S CORPORATE PARTNER COMPANIES*

CORPORATE PARTNERS:

AXEL JOHNSON
BAIN & COMPANY
BANK OF AMERICA
THE BOSTON
CONSULTING GROUP
CITIGROUP
CLAS OHLSON
ELEKTA
GOLDMAN SACHS
GRANT THORNTON
HANDELSBANKEN

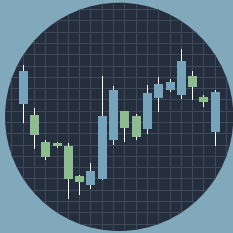
H&H GROUP
H&M
KPMG
L'ORÉAL
MCKINSEY & COMPANY
MORGAN STANLEY
NORDANÖ PARTNERS
PWC
RATOS
SÖDERBERG & PARTNERS
UBS

EXAMPLES OF OTHER COMPANIES:

AMERICAN EXPRESS
ARTHUR D. LITTLE
ASIA PERSPECTIVE
BARCLAYS
EINAR MATTSSON
KLARNA
LINCOLN
INTERNATIONAL
LINKEDIN
MICHAËL BERGLUND
SAMSUNG ELECTRONICS
VOI TECHNOLOGY

*SSE HAS MORE THAN 110 CORPORATE PARTNERS

CHOICE OF SECTOR



34% Finance



34% Consultancy



11% Retail



5% Technology/
Telecoms



3% Real estate



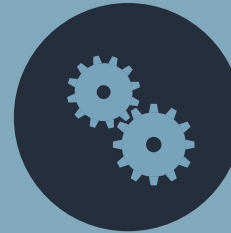
2% Consumer products



2% Education



2% Healthcare



2% Industrial



5% Other

PROGRAM PORTFOLIO

BACHELOR OF SCIENCE PROGRAMS

BACHELOR OF
SCIENCE PROGRAMS
(3 YEARS)

Business & Economics

Retail Management

BACHELOR OF SCIENCE PROGRAMS

MASTER OF
SCIENCE
PROGRAMS
(2 YEARS)

International Business

Finance

Business & Management

Economics

Accounting, Valuation &
Financial Management

DOCTORAL
PROGRAMS
(5 YEARS)

Business Administration

Economics

Finance

MBA EXECUTIVE FORMAT (18 MONTHS)

EXECUTIVE EDUCATION

WHAT EMPLOYERS THINK

"Over the years, SSE has provided us with many top talents who have grown and developed into great leaders within H&M. Interaction with the students through real business cases and projects has given us numerous new insights and ideas on how to improve, although it has also been a great way for us to build relationships with talented people from an early stage."

Daniel Ervér
Country Manager
Sweden



"BCG has a long history of meeting and employing talent from SSE, and we continue to be impressed by the knowledge and skills that they bring to their work. But what makes them unique is their entrepreneurial spirit, willingness to drive change and attitude of everything is possible. We are looking forward to meeting the next generation of SSE graduates at BCG!"

Christina Synnergren
Managing Director & Partner, SSE alumni



"Nordea has for several years had a close collaboration with SSE, simply because of its high educational standard, and its ambitious and engaged students. No matter the circumstances – whether internships, events or other avenues – we continue to be astonished by SSE students' enthusiasm, dedication and ability to challenge us."

Martin A. Persson
Head of Large Corporates & Institutions, Branch Manager Sweden



WHAT ALUMNI THINK

"An education from SSE gives you an analytical toolbox that is valuable no matter in what type of career you end up. Getting the basics of a broad range of topics in business and economics, together with the possibility to specialize during the bachelor's third year and/or in a master program, allows you to develop both a width and depth in terms of knowledge – all in a highly intellectually stimulating setting."

David Hakula, Political Advisor to the Swedish Minister for Home Affairs Mikael Damberg



"SSE taught me a lot, both academically and professionally. I acquired a greater understanding of financial statements, accounting, and how to confidently make decisions based on reports and numbers, and how to be efficient and quick in my execution – all things that are essential as an entrepreneur!"

Elsa Bernadotte
President & Co-founder of Karma in Stockholm, Sweden / Forbes 30 under 30



"The courses taught at SSE have been very helpful for my career as they gave me a great foundation in accounting, valuation, strategy and marketing knowledge, which I use daily at McKinsey. To sum it up, SSE was instrumental to me finding my career path and giving me a great start!"

Jolin Holmgren
Management Consultant at McKinsey & Co in Stockholm, Sweden



STOCKHOLM SCHOOL OF ECONOMICS

The Stockholm School of Economics is rated as a top business school in the Nordic and Baltic countries and enjoys a strong international reputation. World-class research forms the foundation of our degrees, which include bachelor, master, PhD, MBA, and Executive Education programs. Our programs are developed in close cooperation with the business and research communities, providing graduates with opportunities to attain leading positions in companies and other organizations. The School is accredited by EQUIS, certifying that all of its principal activities – teaching as well as research – maintain the highest international standards. The Stockholm School of Economics is also the only Swedish member institution of CEMS and PIM, which are collaborations between top business schools worldwide, contributing to the level of quality for which our school is known.



Stockholm School of Economics · Box 6501 · SE-113 83 Stockholm, Sweden
Phone: +46 8 736 90 00 · info@hhs.se · www.hhs.se

