



*Master of Science in Business and Economics
Finance Specialization
Entering Class 2011
Updated November 2013*

ECTS Grading at SSE

The Stockholm School of Economics changed its grading system in conjunction with the transformation to the Bologna Model in 2007. The main components of the new ECTS grading system includes ECTS credits: 1.5 credits for one full week of studies equal to 60 credits for a full academic year, and five passing ECTS grades: A, B, C, D, E, and F for fail.

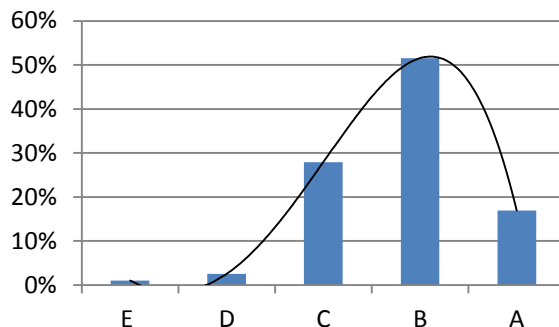
A grade point average (GPA) is calculated as follows: A = 5.0 points, B = 4.0, C = 3.0, D = 2.0, E = 1.0. Thus, the GPA for a student can range from 1.0 – 5.0, with 5.0 being the highest.

To assess the grade performance of an SSE student, one can compare his/her letter grades and individual GPA to the Class GPA of all courses offered to the whole cohort, and to the distribution of grades of all courses offered during the entirety of the program (see below).

Information on grades is updated each year in September, and is available on the SSE website (www.hhs.se).

**ENTERING CLASS 2011
CLASS GPA: 3.81**

MSc in Business and Economics Finance Specialization Entering Class 2011 Grade distribution all courses 2011-2013



Stockholm in November, 2013

Associate Professor Per-Olov Edlund
Academic Controller at SSE