



NAERE 2026

Nordic Annual Environmental and Resource Economics Workshop

11-12 June 2026

Programme Overview

Thursday, 11 June 2026	
09:00-09:15	<i>Welcome Address</i>
09:15-10:30	Parallel Session 1: Air Pollution Carbon Pricing Forests and Carbon Capture
10:30-11:00	<i>Coffee Break</i>
11:00-12:15	Parallel Session 2: Biodiversity 1 ETS Information & Climate Action
12:15-13:15	<i>Lunch</i>
13:15-15:10	Plenary Session 1: Environmental Consequences of Conflict Keynote Lecture: Dominic Rohner (Geneva Graduate Institute) Presentations: Maksym Hamlets (Technology of Progress); Ganna Gladykh (Stockholm Environment Institute); Daniel Spiro (Uppsala University)
15:10-15:30	<i>Coffee Break</i>
15:30-16:45	Parallel Session 3: Water Energy Transition Behavioral
16:45-18:00	Parallel Session 4: Oil Biodiversity 2 Valuation Methods
19:00	<i>Workshop Dinner at Restaurant Bergendal</i>
Friday, 12 June 2026	
9:30-10:00	<i>Coffee</i>
10:00-11:15	Parallel Session 5: Climate and Labor Markets Renewables and Electricity Preferences and Acceptability
11:15-12:30	Parallel Session 6: Optimal Policy Transport Conflicts and Natural Disasters
12:30-13:30	<i>Lunch</i>
13:30-14:30	Plenary Session 2: Keynote Lecture: Hélène Ollivier (Paris School of Economics)
14:30-15:45	Parallel Session 7: Climate Policy Instruments Forests
15:45	<i>Workshop Ends</i>

Keynote Speakers

Hélène Ollivier

Estimating Treatment Effects in the Presence of Spillovers: Lessons from Two Applications in Environmental Economics

Paris School of Economics

Lecture: Friday, 12 June 2026 · 14:30–15:30 · Room A750



Ollivier is Professor at Paris School of Economics and a Research Fellow at the CNRS. Ollivier's research in environmental economics examines how environmental policies affect manufacturing firms and how environmental shocks – such as air pollution and temperature extremes – propagate through interconnected firms and countries, and has been published in leading field journals including JEEM, Journal of Development Economics, and Journal of Public Economics. She is Co-Editor at the Journal of Environmental Economics and Management (JEEM) and the Review of Environmental Economics and Policy (REEP).

Dominic Rohner

Conflict and the Environment

Geneva Graduate Institute · University of Lausanne

Lecture: Thursday, 11 June 2026 · 13:15-14:00 · Room Torsten



Rohner is Professor of Economics at the Geneva Graduate Institute, where he holds the André Hoffmann Chair in Political Economics and Governance, and Professor at the University of Lausanne. His research focuses on political economics, conflict, and governance, and has been published in leading general interest journals including the American Economic Review, Econometrica, and the Quarterly Journal of Economics. He is the author of *The Peace Formula: Voice, Work and Warranties*.

Detailed Programme — Thursday, 11 June

Thursday, 11 June 2026			
Time	Room A328	Room A336	Room A342
09:00–09:15	Welcome Address		
09:15–10:30	<p><u>Air Pollution</u> Hazy Dreams: The Impact of Air Pollution on Sleep <i>Benedikt Janzen (University of Passau)</i></p> <p>Urban Canopy Loss and Heat-Related Mortality: Evidence from Mexico <i>Mathilda Eriksson (Georgia State University)</i></p>	<p><u>Carbon Pricing</u> Optimal Carbon Taxes: A General Analytical Formula <i>Torben Mideksa (Uppsala University)</i></p> <p>Climate Implications of Regional Technology Spillovers <i>Gaute Hjerpaasen (University of Oslo)</i></p> <p>Tax Progressivity and Income Inequality: A Simple Formula <i>Julius Andersson (SITE)</i></p>	<p><u>Forests and Carbon Capture</u> Political Representation and Forest Cover in India <i>Tanmay Singh (Jönköping University)</i></p> <p>Break-even profitability conditions for CCUS under comprehensive carbon-pricing <i>Lauri Sääskilähti (LUKE)</i></p> <p>Coping at a Cost: Weather Shocks and Forest Loss in Rural Vietnam <i>Louie Marie Eluriaga (SLU)</i></p>
10:30–11:00	Coffee Break		
11:00–12:15	<p><u>Biodiversity 1</u> Valuing Pathways to Baltic Sea Recovery in Finland <i>Liisa Saikkonen (Finnish Environment Institute)</i></p> <p>Controlling Land-Use Change with a Nature Loss Fee <i>Linda M. A. Pesu (University of Helsinki)</i></p> <p>Misallocation of Protected Areas <i>Rufus Panelius (University of Helsinki)</i></p>	<p><u>ETS</u> The Impact of the EU ETS on the Environmental and Economic Performance of Manufacturing Firms in Sweden <i>Hanna Lindström (Umeå University)</i></p> <p>From Free to Fee: How Emission Permit Allocation Affects Firms <i>Benjamin Hatterer (University of Helsinki)</i></p> <p>When to Go Green? Firm Dynamics & Clean Technology Adoption <i>Bas Gorrens (KU Leuven)</i></p>	<p><u>Information and Climate Action</u> Does Climate Information Increase Support for Carbon Pricing? Experimental Evidence from a High-Vulnerability, Low-Emission Economy <i>Alejandro Jose Lopez Feldman (University of Gothenburg)</i></p> <p>Climate-Impact Knowledge and Consumer Behavior: Evidence from a Randomized Information Experiment Linked to Scanner Data <i>David Rune Bilén (NHH)</i></p> <p>Learning with Economists in Petro-Rich Economies: Climate Change Policies in Russia <i>Gerhard Toews (University of Stavanger)</i></p>
12:15–13:15	Lunch Break		
13:15–15:10	<p>Plenary Session 1: The Environmental Consequences of Conflict Keynote Lecture: Dominic Rohner (Geneva Graduate Institute) <i>Conflict and the Environment</i></p> <p>Perspectives on the Environmental Impact of the War in Ukraine Presenters: Ganna Gladkykh (Stockholm Environment Institute) <i>The Green Transition as a Path to Ukraine's Reconstruction and EU Integration</i>; Maksym Hamlets (Technology of Progress) <i>The Ukrainian Ecosystem During the War</i>; Daniel Spiro (Uppsala University) <i>Economic Warfare and Environmental Threats in the Baltic Sea</i></p> <p>Panel Discussion: moderated by Julius Andersson (SITE) Location: Room Torsten</p>		
15:10–15:30	Coffee Break		
15:30–16:45	<p><u>Water</u> Pharmaceuticals and Personal Care Products (PPCPs) on the loose! <i>Sufyan Ullah Khan (University of Stavanger)</i></p> <p>When Local Food Is Invasive: Consumers' Willingness to Pay for Pacific Oysters <i>Eliud Mugendi (NMBU)</i></p> <p>Joint versus Sequential Targeting: Evidence from an Application to Water Policy <i>Raphael Filippelli (University of Copenhagen)</i></p>	<p><u>Energy Transition</u> Separating Energy Substitution from Factor-Biased Productivity: Evidence from Norwegian Firms <i>Fuchen Zhang (University of Stavanger)</i></p> <p>Norm-Setting Divestment: The World's Largest Investor's Coal Exit and Global Emissions <i>Fenella Cordova Carpena (Oslo Metropolitan University)</i></p> <p>The Hidden Carbon Costs of Flexibility: Nuclear Load-Following in Low-Carbon Power Systems <i>Chloé Le Coq (CRED/SITE)</i></p>	<p><u>Behavioral</u> A Model of Moral Consistency, Self-Image, and Pro-Environmental Behavior <i>Claes Ek (University of Gothenburg)</i></p> <p>Do Households Make Informed Decisions about Energy Efficiency? Evidence from Majority Voting on Rental Housing Retrofits <i>Linde Kattenberg (Aarhus University)</i></p> <p>Do We Discount Money and the Environment Differently? Evidence from Stated Willingness to Pay Data <i>Fredrik Carlsson (University of Gothenburg)</i></p>

Thursday, 11 June 2026

16:45–18:00

Oil

How Does the Cost of Capital Affect Oil Supply?

Helena Cordt (DTU)

The Climate-Wise Values of Oil

Léo Jean (PSE)

Fiscal Fragmentation and Global Misallocation

Lassi Ahlvik (University of Helsinki)

Biodiversity 2

Valuing Biodiversity and Ecosystem Services from Wetland Restoration: Latent Class Analysis across Six EU Countries

Leo Raivonen (LUKE)

Computing a National Forest Biodiversity Account for Sweden

José Jeremias Ganhane (University of Gothenburg)

Micro-Founded Valuation of Pollinators in Sweden Using Machine Learning Predictinos

Marc Yeterian (SLU)

Valuation Methods

A Tale of Two Municipalities: Public Acceptance for Wind Power in Norway

Lijun Liu (University of Stavanger)

Compensation for Externalities: Evidence from Wind Power Development in Denmark

Sandra Bernick (Imperial College London)

No Sales, No Problem? Vignette-Based Delphi Valuation of Localized Environmental Externalities

Solveig Borkenhagen (NMBU)

19:00

Workshop Dinner at Restaurant Bergendal

Detailed Programme — Friday, 12 June

Friday, 12 June 2026			
Time	Room A328	Room A336	Room A342
09:30–10:00	<i>Coffee</i>		
10:00–11:15	<p><u>Climate and Labor Markets</u> Quantifying the Effects of Commodity Booms on Regional and Sectoral Outcomes <i>Sandra Kurniawati (SLU)</i></p> <p>Environmental Shocks and Female Labor Supply: Evidence from the Dustbowl <i>Freya Rubel (Freie Universität Berlin)</i></p> <p>The Composition of Jobs in the Green Economy: Labor Market Reallocation with Adjustment Frictions <i>Olli-Pekka Kuusela (UNU-WIDER)</i></p>	<p><u>Renewables and Electricity</u> Dunkelflauten v. Abundant Renewables: What are the Effects on Electricity Prices and Trades? <i>Alberto Sergio (SLU)</i></p> <p>Measuring the Benefits of Pricing Transmission Constraints in the European Wholesale Market for Electricity <i>Akseli Väiliviita (Aalto University)</i></p> <p>Legally Binding Energy Solidarity: The Green Transition–Parity Trade-off in the EU <i>Elena Paltseva (SITE)</i></p>	<p><u>Preferences and Acceptability</u> Heterogeneous Climate Policy Preferences in Incomplete Markets <i>Léo Reitzmann (PSE)</i></p> <p>Information, Uncertainty, and Acceptability of Energy Infrastructure: Evidence from a Randomized Experiment on SMRs <i>Piia Remes (VATT)</i></p> <p>Facing the Hard Truth: Evidence from Climate Change Ignorance <i>Pamela Campa (SITE)</i></p>
11:15–12:30	<p><u>Optimal Policy</u> Shallow Lakes with Catastrophic Risks <i>Eric Nævdal (HVL)</i></p> <p>Green Public Procurement: Policies and Incentives for Investment in New Zero Emissions Technologies <i>Mads Greaker (Oslo Business School)</i></p> <p>Compensating Losers <i>Arttu Ahonen (Umeå University)</i></p>	<p><u>Transport</u> The Impact of Ferry Electrification on Air Quality <i>Nicole Wägner (NHH)</i></p> <p>How Do Consumers Respond to Tax Changes in Electric Vehicles? <i>Xiaobing Zhang (DTU)</i></p> <p>Matching Cars <i>Matti Liski (Aalto University)</i></p>	<p><u>Conflicts and Natural Disasters</u> The Winner's Curse of War <i>Henk Schouten (Uppsala University)</i></p> <p>From States to Neighborhoods: Measuring Inequality Across Spatial Scales with Satellite Imagery <i>Alejandro Del Valle Suarez (Georgia State University)</i></p> <p>Sanctioning an Exporter Wielding Market Power Without Excessively Raising the Price Buyers Pay <i>Julien Daubanes (DTU)</i></p>
12:30–13:30	<i>Lunch Break</i>		
13:30–14:30	<p>Plenary Session 2 Keynote Lecture: Hélène Ollivier (Paris School of Economics) <i>Estimating Treatment Effects in the Presence of Spillovers: Lessons from Two Applications in Environmental Economics</i> Location: Room A750</p>		
14:30–15:45		<p><u>Climate Policy Instruments</u> Scrappage Policies and Carbon Emission Reduction: Evidence for a Swedish Car Scrappage Program <i>Levi Soborowicz (SLU)</i></p> <p>Teleworking and the Environment: Exploring Direct and Rebound Effects of Working from Home <i>Beate Thies (University of Vienna)</i></p> <p>The Causal Effects of Climate Investment Subsidies: Regression Discontinuity Evidence from Swedish Firms <i>Shon Ferguson (SLU)</i></p>	<p><u>Forests</u> When Disturbance Demands Action: Endogenous Clear-Felling after Salvage in Nordic Forests <i>Wu Tong (LUKE)</i></p> <p>Competitive Harvest in Age-Structured Forests <i>Jussi Lintunen (LUKE)</i></p> <p>Saving Genetic Information <i>Rob Hart (SLU)</i></p>
15:45	<i>Workshop Ends</i>		

Guidelines for Presentations and Discussions

Presenters

- Each presenter will have 15 minutes for the presentation, and 10 minutes for questions and comments (25 minutes in total).
- Please email your presentation to the session chair and bring your presentation (PDF or PowerPoint) on a USB stick as a back-up.

Session Chairs

- The session chair is the last presenter in each session.
- The session chair will introduce the speakers, ensure each presenter keeps to the time limit, and will also present all presentations from his/her laptop (so bring your laptop). In the case that assistance is needed a member of the organizing team will be there to support.

Workshop Dinner

The workshop dinner will take place on Thursday evening, 11 June 2026. Presenting participants are invited to join the dinner.

Dinner location: Restaurant Bergendal – Landsnoravägen 110, Sollentuna

Time: 19:00

Transportation: A bus will depart from outside SSE at 18:15. Return transportation will leave at 22:00 and travel to Stockholm Central Station (T-Centralen), with a stop at Sollentuna Station along the way.



Workshop Venue & Getting There

Workshop Venue

Stockholm School of Economics (SSE), Sveavägen 65, 113 83 Stockholm

All workshop sessions take place on the SSE campus. The parallel sessions are held in the classroom wing (Rooms A328, A336, A342 on floors 3), the plenary session 1 is held in Room Torsten (floor 2/3), and the plenary session 2 is held in Room A750 (floor 7). Please see the floor map.

Getting to SSE from Stockholm Arlanda Airport

- Arlanda Express train: direct to Stockholm Central Station (~18 min, most expensive).
- Airport coaches (Flygbussarna / Flixbus): direct to the city centre (~45 min, cheaper).
- Stockholm Commuter Rail (Pendeltåg): via Stockholm Central (~40 min, cheapest; requires SL ticket).

Nearest Metro Station

Rådmanngatan (green line)

SSE Building Layout

All workshop rooms are located on floor 3 of the main SSE building (Sveavägen 65). The floor plan below shows the locations of the relevant rooms (marked in pink).

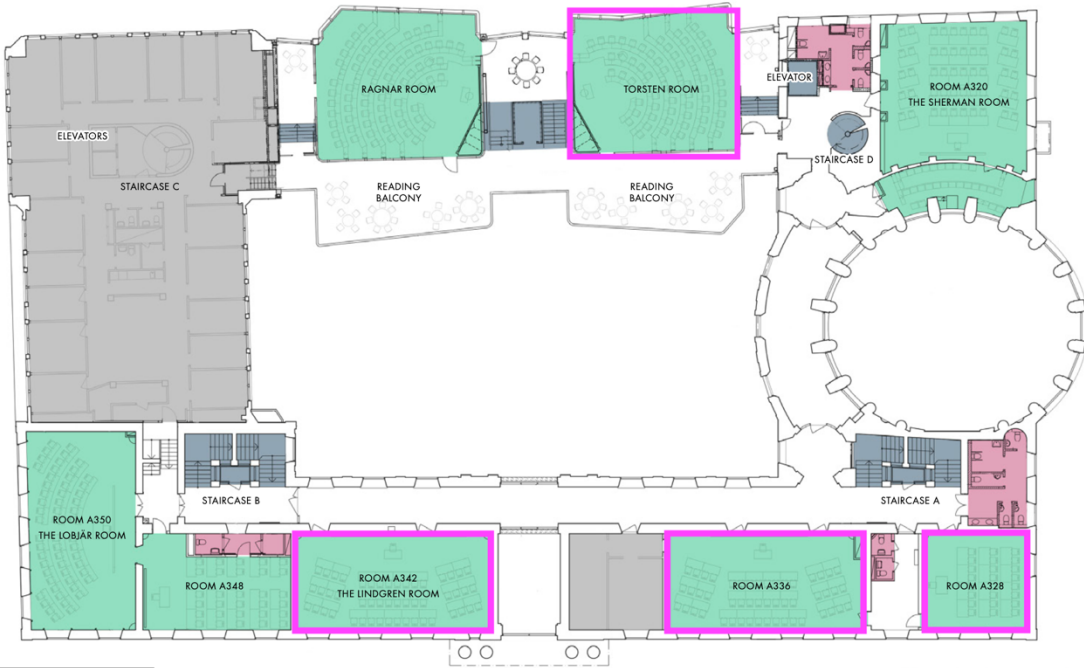
- Parallel session rooms: A328, A336, A342 (floor 3)
- Plenary 1: Torsten
- Plenary 2: A750 (floor 7)

Contact Details

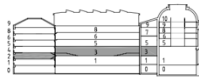
E-Mail: naere2026@hhs.se

Organizing Committee: Julius Andersson, Pamela Campa, Elena Paltseva

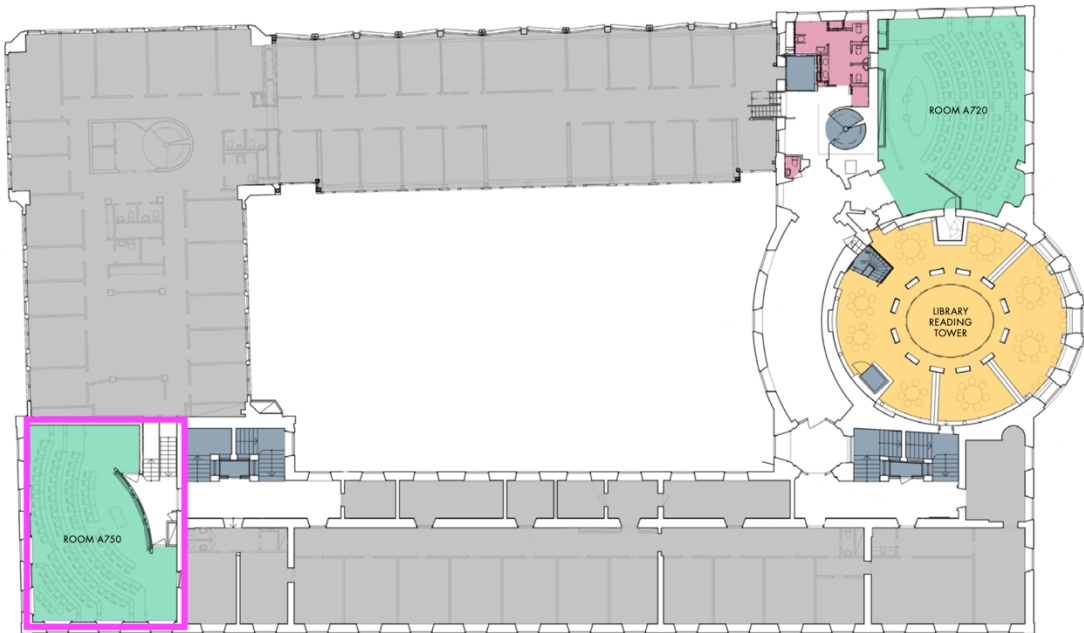
FLOOR 2/3



- CLASS ROOMS
- RECEPTION, LIBRARY ETC
- STAIRS, ELEVATORS
- WC
- NO ACCESS



FLOOR 6/7



- CLASS ROOMS
- RECEPTION, LIBRARY ETC
- STAIRS, ELEVATORS
- WC
- NO ACCESS

