

T H E
småtting guide



2 0 1 9

Welcome to SSE!



SSE Capital Partners

BONNIER  Cevian Capital **Deloitte.**

RATOS  **Goldman Sachs**
Gives

Handelsbanken  **INDUSTRI VÄRDEN**

KPMG **Nordea** **investor**

 **pwc** **McKinsey & Company** **SEB**

 **SCANIA** **SKANSKA**

What is the småtting guide?

The Småtting Guide is the 100-page booklet we have compiled to give you some insight and hopefully answer some questions about SSE and SASSE.

Firstly, you will get to read about the introduction weeks. These weeks will be packed with new people, events and information and while you will have to process a lot of impressions and maybe sleep a little less than usual we promise it will be one of the best experiences of your time at SSE.

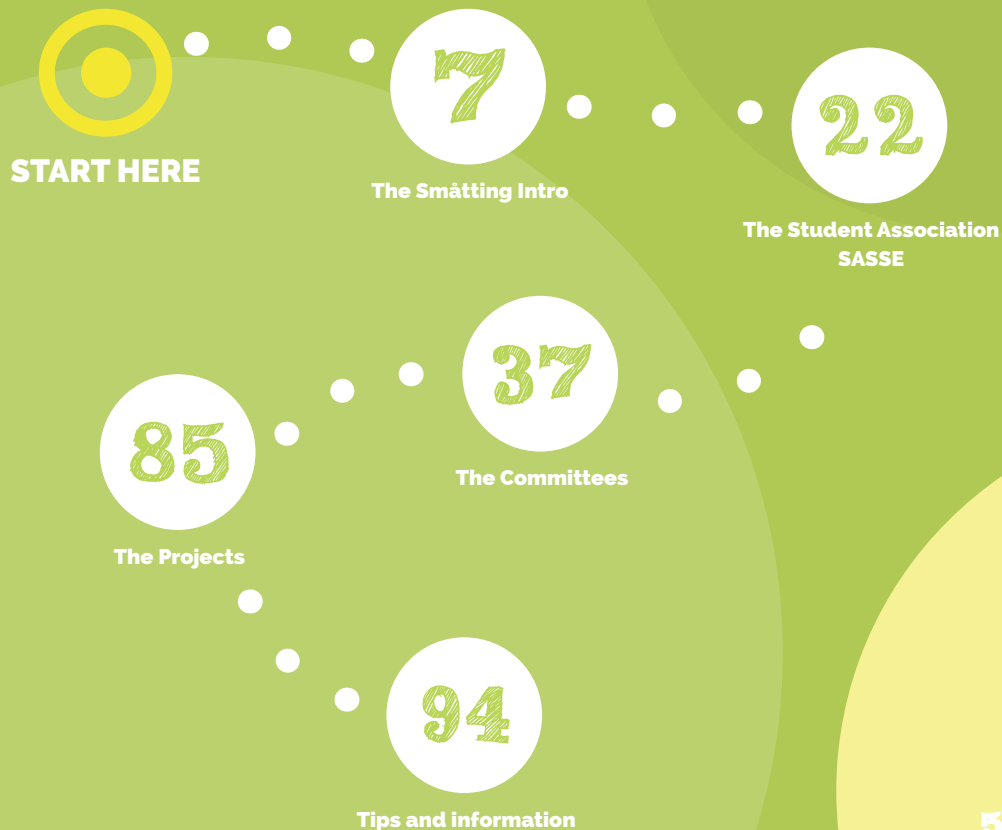
Life continues after the intro-weeks, and so does this guide, because there is so much more to explore than is possible to fit into two weeks. A large part of life at SSE is SASSE so in this part of the guide you will learn more about the different committees and projects that you can get involved in, or how you start your own. The Student Association is like an own little world with a wide variety of things to do and experience and it is completely up to you how much you choose to get involved. There will undoubtedly be new and unfamiliar situations, especially during the first weeks at SSE, therefore we will end the guide with a few tips on how to handle sittningar, the legendary Handels Lov and a customized dictionary with useful vocabulary. Also, we will answer more study related questions like course literature and provide a packing list for those of you who are moving to Stockholm.

Hopefully this guide will help you understand life at SSE, SASSE and the coming Introduction Weeks. However do not feel any pressure if it doesn't make sense at first, it will all fall into place soon enough! We could not be more excited to meet you!

Hugs from the Introduction Committee's Communications Team



How to read the guide



A radically different future is starting to take shape.
Do you want to join us in transforming
the strategic and digital landscape of tomorrow?

Boston Consulting Group is a global management consulting firm and the world's leading advisor on strategy. We partner with companies from across all sectors to identify their most critical challenges and transform their businesses.

We are looking forward to meeting you during your time at SSE, and hope to share more of what opportunities are waiting for you at BCG at our upcoming events!

Find out more about our work, people and culture at
BCG.COM/CAREERS and INSTAGRAM.COM/BCGINSWEDEN

småtting intro

2019

Dear Småtting,

Welcome to the Stockholm School of Economics and congratulations! We are Tova, Erik, Hannes and Matilda, the Big Parents of this years Introduction weeks.

August 19th marks the beginning of your journey at SSE and the two following weeks are packed with events you don't want to miss.

We are here for you whatever you need, whether it is questions about studies, life in Stockholm, or just a friendly conversation. Together with our wonderful Introduction Committee our goal is to make you feel at home right away. All of us at Handels are eagerly waiting to welcome you with wide-open arms and lots of love.

We understand that you feel nervous, confused but at the same time very excited - we did too one year ago when we started. It will feel scary in the beginning, but trust us, behind the big oak door at Sveavägen 65 awaits the best time of your life. There is nothing to worry about!

The first period will be the equally intense as it is fun, so make sure that you are well-rested and loaded with energy when you come to us!

We are incredibly happy that you have chosen the SSE and we can assure you that it is the best decision you have ever made. Together with the rest of the Småtting Committee we can't wait to meet you!

See you in August!

Tova Geiger
Stormamma
Business Economics
+46730372414

Erik Olivecrona
Storpappa
Business Economics
+46708310391

Matilda Ljunglöf
Stormamma
Retail Management
+46737548340

Hannes Hellmér
Storpappa
Retail Management
+46738154666



The Småtting Committee 2019



Big Parents

- Matilda
- Tova
- Erik
- Hannes



Communications

- Marcus
- Erika
- Emma
- Sara
- Velitchko



Spons

- Anna
- Nora
- Emil
- Adam



Company

- Vendela
- Tilde
- Gustav

- Maja
- Spencer
- Jonathan
- Ida



Introweek

- Anna
- Johan
- Maja
- Axel



The Småtting Trip

Intro Activities Business Economics

<p>August</p> <p>19</p> <p>Monday</p> <p>DAY 1 FOR GROUP A & INTROPUB</p>	<p>August</p> <p>20</p> <p>Tuesday</p> <p>DAY 1 FOR GROUP B & INTROPUB</p>	<p>August</p> <p>21</p> <p>Wednesday</p> <p>DELOITTE OLYMPICS</p>	<p>August</p> <p>22</p> <p>Thursday</p> <p>THE STOCKHOLM TREASURE HUNT WITH BAIN & CO</p>	<p>August</p> <p>23</p> <p>Friday</p> <p>THE UPPSAMLINGSHEAT</p>	<p>August</p> <p>24</p> <p>Saturday</p> <p>CHILL OUT WITH QVARTZ AND GET THEIR SSE LIFE HACKS</p>	<p>August</p> <p>25</p> <p>Sunday</p> <p>PRE-PARTY ZILLIS THE REBUS HUNT</p>
<p>August</p> <p>26</p> <p>Monday</p> <p>TO BE ANNOUNCED...</p>	<p>August</p> <p>27</p> <p>Tuesday</p> <p>BCG MYSTERY NIGHT</p>	<p>August</p> <p>28</p> <p>Wednesday</p> <p>MCKINSEY LOUNGE</p>	<p>August</p> <p>29</p> <p>Thursday</p> <p>"HOW TO ATTEND A BANQUET"- BANQUET</p>	<p>August</p> <p>30</p> <p>Friday</p> <p>REST ^z_z Z</p>	<p>August</p> <p>31</p> <p>Saturday</p> <p>THE SMÅTTING TRIP WITH ARTHUR D LITTLE</p>	<p>September</p> <p>1</p> <p>Sunday</p>

Intro Activities Retail Management

<p>August</p> <p>19</p> <p>Monday</p> <p>DAY 1 & INTROPUB</p>	<p>August</p> <p>20</p> <p>Tuesday</p> <p>CRAYFISH PARTY & INTROPUB</p>	<p>August</p> <p>21</p> <p>Wednesday</p> <p>DELOITTE OLYMPICS</p>	<p>August</p> <p>22</p> <p>Thursday</p> <p>THE STOCKHOLM TREASURE HUNT WITH BAIN & CO</p>	<p>August</p> <p>23</p> <p>Friday</p> <p>THE UPPSAMLINGSHEAT</p>	<p>August</p> <p>24</p> <p>Saturday</p> <p>CHILL OUT WITH QVARTZ AND GET THEIR SSE LIFE HACKS</p>	<p>August</p> <p>25</p> <p>Sunday</p> <p>PRE-PARTY ZILLIS THE REBUS HUNT</p>
<p>August</p> <p>26</p> <p>Monday</p> <p>TO BE ANNOUNCED...</p>	<p>August</p> <p>27</p> <p>Tuesday</p> <p>BCG MYSTERY NIGHT</p>	<p>August</p> <p>28</p> <p>Wednesday</p> <p>MCKINSEY LOUNGE</p>	<p>August</p> <p>29</p> <p>Thursday</p> <p>"HOW TO ATTEND A BANQUET"- BANQUET</p>	<p>August</p> <p>30</p> <p>Friday</p> <p>REST ^{z z} Z</p>	<p>August</p> <p>31</p> <p>Saturday</p> <p>THE SMÅTTING TRIP WITH ARTHUR D LITTLE</p>	<p>September</p> <p>1</p> <p>Sunday</p>

SASSE OPEN HOUSE

At the Student Association's Open House you will get the chance to explore and learn more about the projects and groups described in this guide, and meet the people behind them. Take the chance to sign up to those you find interesting!



MCKINSEY LOUNGE

During your second week, McKinsey & Company along with Småttingkommittén invites you to a grandiose after school lounge. You are welcome to Rotundan at 17:00 for a mingle with music, drinks and snacks. Many of McKinsey's colleagues will be present to share their journey from their first days at SSE to their current careers at McKinsey. A perfect opportunity to get to know them and the world of consulting better, and start getting excited for the weekend's Småttingtrip with the other students.



McKinsey
& Company

DELOITTE OLYMPICS

Get to know your new friends and Deloitte while you try out fun sports and games at this year's edition of Deloitte Olympics. We look forward to a fun and active day with food, beverages and a lot of mingle!

Deloitte.



THE STOCKHOLM TREASURE HUNT WITH BAIN & CO

Småttingar are you excited? Together with the Introduction Committee, Bain & Company on a tour around Stockholm. With the use of your phone you will complete tasks at different locations around the city centre. It doesn't matter if this is your first time in the capital or if you are born and raised in Stockholm, the key is to use your wit, be fast and try to have as fun as possible! Be sure to accept this challenge, there are awesome prizes up for grabs!

BAIN & COMPANY



MEET & GREET WITH CIVILEKONOMERNA

During the first day at SSE you will get a guided tour around the school. One part on the guided tour, that you don't want to miss, is that Civilekonomerna will be there and talk about their union. This is a fantastic opportunity for the new student to learn more about Civilekonomerna and their great work.

civileKONOMERNA



THE UPSAMLINGSHEAT

After almost a week at SSE it is time for a big party in the Rotunda to bring everyone together: The Uppsamlingsheat. For the first time all new students get to party together, it will undoubtedly be a night to remember!




CHILL OUT WITH QVARTZ AND GET THEIR SSE LIFE HACKS

Are you pondering whether to go on exchange or what specialization to choose? Or are you curious about how to make the ultimate study plan or where to find the best place to study on campus? We can help you! On August 24, we invite you to a "hangover heaven" at our office on Birger Jarlsgatan 7 – home to some of the sharpest and kindest management consultants. While curing your headache from Uppsamlingsheatet, we will let you in on some of our absolute best SSE life hacks to help make the next three years the best in your life. We will of course provide comfortable seating and plenty of ice cream, cleansing juices and scrumptious food. See you on August 24!



QVARTZ

BCG MYSTERY NIGHT



Get ready for a full evening of exciting happenings together with your classmates! For the first time ever, Boston Consulting Group will be a part of the Introduction weeks at SSE and invites you to experience something magical, literally speaking. We will meet you after your final class on Tuesday, 27/8, at SSE and end the evening at a secret location in central Stockholm where food and drinks will be served.



BCG BOSTON CONSULTING GROUP


We are very excited to meet you and to be a part of the Introduction weeks at SSE - we remember how fantastic and memorable they were!

"HOW TO ATTEND A BANQUET" - BANQUET

This is the night you get introduced to SSE's traditions and the art of attending a sitting. Here get to make all the mistakes a learn how to avoid future misunderstandings during the many banquets during your time at SSE.



THE REBUS HUNT



Join the Entertainment Committee on a energetic day of peculiar competition with unclear winners. Prepare your costume and chants to take your Småtting Group to a prestigious first place.

THE SMÅTTING TRIP

The grand finale of the Introduction!
Read more on the next page...

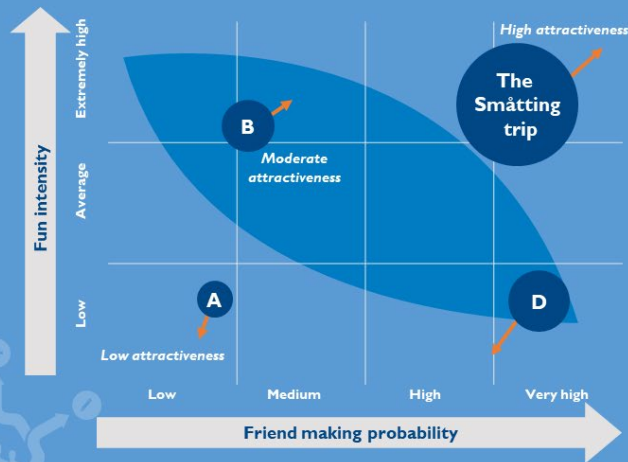


Arthur D Little



Arthur D Little

invites you to this year's
magical Småtting trip



Trend (to the
planning
horizon)

A: Exams in May
B: SASSE banquets
D: the SPSS group project

After Arthur D. Little invented the management consulting industry in 1884 it would take over a hundred years before anyone would come up with anything so genius again....

However, In the early 2000s it happened!
Someone asked: What if the Småtting intro could be culminated by a trip? A trip to a magical place? A trip filled with activities, competitions and a legendary banquet? Now tell me, wouldn't that be sweet 🎵

There is always a secret theme for the trip, which will be revealed during the Introduction Weeks. Make sure to prep your costume and get ready for a magical experience!

The weekend 31 Aug-1 Sep will be the start of many unforgettable memories and friendships lasting a lifetime. Buy your ticket now to secure your spot, this will be a trip like no other!

**The fun continues
after the intro...**



THE STUDENT ASSOCIATION

Welcome to SASSE!

WHAT IS SASSE?

The Student Association at the Stockholm School of Economics is a unique organization. SASSE exists thanks to the strong drive and commitment among the SSE students and the wish to have fun and develop as a community. The purpose of SASSE is fundamentally to care for the joint interests of the students, which can be roughly summarized to educational coverage, extracurricular activities and career service. SASSE is led by a board consisting of a President, Vice President, Treasurer and eight committee presidents.

HOW DO I GET INVOLVED?

Almost all students at SSE get involved in SASSE for some period of their studies. The level of involvement stretches from being a functionary during a fair or partying in the Rotunda to working full-time for one year as a part of the SASSE Board. Opportunities arise throughout the year to apply to be part of the different yearly projects. These events are advertised on our Facebook-page "SASSE members" and on the SASSE web (www.sasse.se). There you will find detailed information on all our projects and various contact information. Everyone is encouraged to take full advantage of the opportunities within SASSE by either joining an existing team or setting up your own project.

SASSE RECEPTION

This is where the SASSE receptionist works and where a big part of the administrative work of the student association is handled. At the reception you can get help with your student card ("Mecenat"), bookings in the SASSE-calendar, getting SASSE access to the committee rooms or getting information regarding almost anything within SASSE. You can also get patches or aspirin from our first-aid-kit. The opening hours can be found on the reception door. Do not hesitate to visit if you have any questions about SASSE or anything else.

SASSE BOARD

The SASSE Board manages the daily operations of SASSE and all its committees. The Board consists of the eight committee presidents as well as the President, Vice President and Treasurer. The SASSE Board is elected for a one-year mandate by personal vote, and the election takes place in the first week of December. You can recognize the Board lurking around through the corridors, more often in purple overalls than without.



THE STUDENT ASSOCIATION



**The SASSE Board
19/20**

First of all, Congratulations! and a big warm welcome to our family at Stockholm School of Economics.

I remember when I received my letter of admission and got completely ecstatic about having the opportunity to study at one of the most renowned business schools in Europe. After the initial excitement I did however become a bit nervous, which I now understand is completely normal. Coming to a new school, sometimes from another city or even country can be scary but it's important to remember that most of your peers are feeling equally lost at this time...

...But fear not! There's a place at SSE where all students come together and can share experiences, laughs and advice - The Student Association at the Stockholm School of Economics (SASSE).

SASSE has the goal of being Social, Educational and Professional. With around 700 active members and activities ranging from sport practices, tournaments, company events and career fairs to pubs, banquets and parties, there is something for everyone who wants to get real practical experience, polish their leadership skills, start a new project or just take a break in their studies and meet new people.

We encourage you to take initiatives, dare, try, fail, learn and grow! Every person admitted to SSE was most likely top of their class in some regard, and all of us uniting here means that there is an endless amount of varied knowledge that we can use to become more well-rounded individuals. I therefore also want to encourage you to come to the school with a humble mindset, share your experience, let others share theirs with you and help each other - that's what we do here at SSE.

And if you have any questions about our organization, what else to expect or where to buy lunch, send me an email at president@sasse.se or swing by our reception <3

-ARIAN TAVASSOLI SASSE PRESIDENT 19/20



Arian Tavassoli
President 19/20

Niclas Jadberg Vice President 19/20



WHAT IS YOUR ROLE AT SASSE?

- I am responsible for all the daily activities within the association. This includes everything from lending out a hammer to helping new initiatives come to life. Ideas or question? I am your guy!

WHAT IS YOUR FAVOURITE THING ABOUT SASSE?

- My favorite thing about SASSE is the amazing combination of developing yourself and making friends for life doing so. We call it our professional playground!

DO YOU HAVE ANY TIPS FOR OUR NEW STUDENTS?

- Entering the oak door might seem terrifying. Remember that we are all looking forward to welcoming you with open arms on the other side of that door. If you made it this far, you can go anywhere. So, stay curious, have fun and enjoy the ride!

Kalle Segersven Treasurer 19/20



WHAT IS YOUR ROLE AT SASSE?

- I am in charge of the economic function of the Student Association. This involves budgeting, accounting, and in general making sure that SASSE is in good shape economically.

WHAT IS YOUR FAVOURITE THING ABOUT SASSE?

- The people! While trying your wings in leadership, accounting, sales, and project management in any of the fantastic SASSE projects, you meet so many great people who brighten up your time at SSE and become your friends for life.

DO YOU HAVE ANY TIPS FOR OUR NEW STUDENTS?

- Don't fret! From the moment that you will step in through the oak door at Sveavägen 65 you will see that students at SSE are as helpful and caring as they get. While the introduction weeks will surely be hectic and filled with new impressions, you will in the hands of the amazing Introduction Committee have absolutely nothing to worry about.

The Student Council

Two years ago, I was in your shoes, extremely excited to start SSE. Two years later I can say that you have an amazing time ahead. Take the opportunity, talk to people, see what the school has to offer and apply for a crazy SASSE project you find interesting. School will be hard from time to time but everything will solve itself eventually and remember: you can reach how far you want in life and you have the capacity to do ANYTHING you want.

One of the best things about school is SASSE. It gives us so much in terms of friends, fun times and experience very valuable for your career. Therefore, I suggest you try out different things and see what you like. As a famous old BC President once told me: Apply to everything, regret nothing!

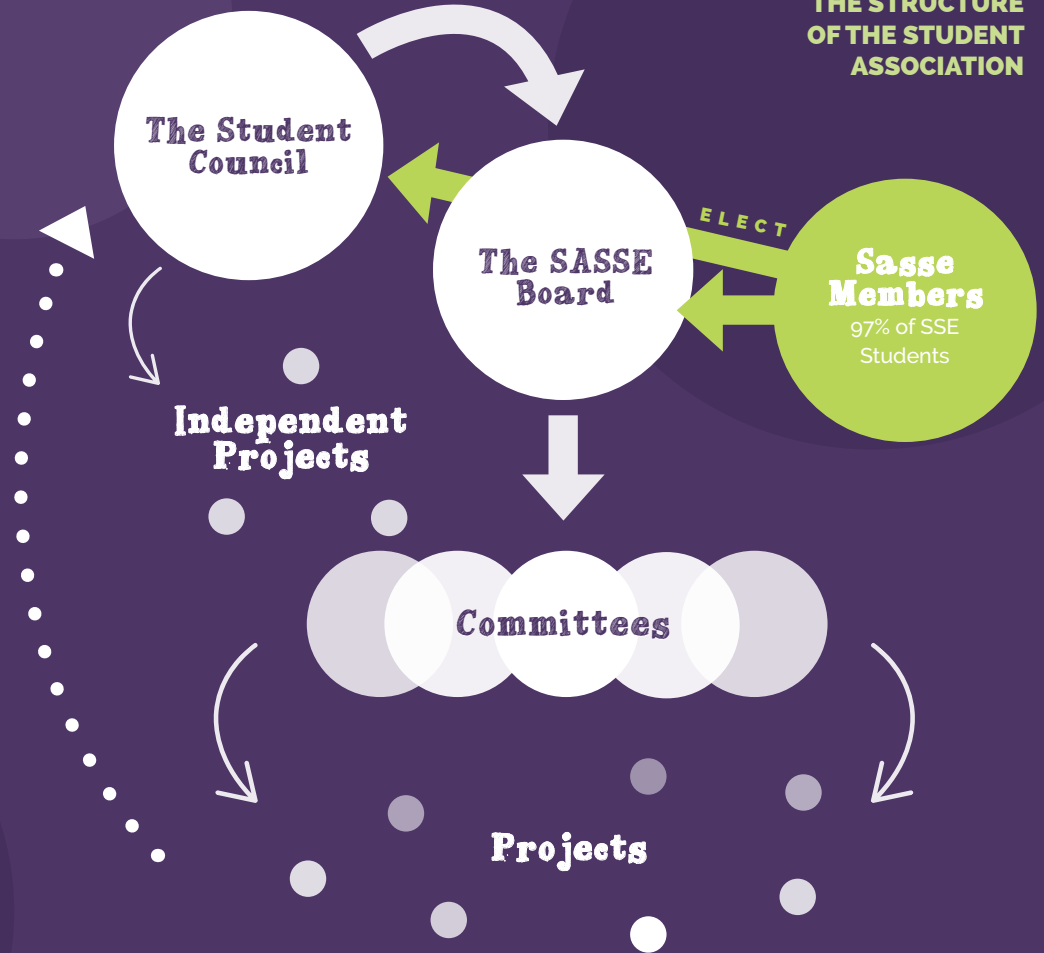
The Student Council, however, works behind the scenes and I would claim that a majority of the students never encounter the Student Council, more commonly referred to as FUM (short for "Kårfullmäktige", and no, the abbreviation doesn't really make sense). The Council is the strategic decision-making organ within the association and we in the Board of Directors operate as the board of a company. FUM works as a forum for complex debates, vision creating as well as auditing the day-to-day operations. Making all the crucial decisions and steering the SASSE board in the right direction. Can you handle power? Then you don't need to look any further...

If you have questions regarding The Student Council, a motion you want to write to change the regulations or just want to chat, don't hesitate to contact me or just grab hold of me in the corridor.

Yours truly,

OLIVIA LEMMEL, CHAIR OF COUNCIL 19/20
+46701458881
chair@sasse.se

THE STRUCTURE OF THE STUDENT ASSOCIATION



Equality Group

To SASSE it is of utmost importance that all members are treated equally and given the same opportunities. All members should feel welcome and are entitled to the same rights of respect and integrity.

As the equality representative, it is, therefore, my responsibility to make sure that all activities within the association will achieve an environment where equality and inclusion is a given. This year I will particularly focus on making sure that every type of SASSE member feels seen and heard. And in order to do so, I will need the help of you smättingar. Maybe you will be the innovative souls needed in my equality group? :)



RUT YIRDAW
EQUALITY REPRESENTATIVE

Congrats to your spot at
**Stockholm School of
Economics!**

We're going out on a limb
and assuming you might be
interested in **management
consulting**. If we're right -
we'd like to meet you*

*Not only an awesome opportunity to get to know more about us and the industry, but also to get a nice lunch when the student funds are low.

cupole



Equality at SSE

Dear new students,

Let me join the chorus of people saying, "Welcome to SSE!"

As SSE's equality and diversity manager, I basically have one responsibility—making sure that everyone feels welcome and included here. I really want you to know that we take these issues seriously and are committed to ensuring that you can focus on your studies regardless of who you are or where you come from.

However, at some point you may experience something that just doesn't feel right. No matter what it is, you should never hesitate to contact me. Things like discrimination, harassment, sexual harassment and bullying are illegal and have no place at SSE.

Read more on the SSE website and I'll see you in August!

KAROL VIEKER
SSE EQUALITY AND DIVERSITY MANAGER
karol.vieker@hhs.se



Karol Vieker
SSE equality and diversity
manager

Opportunities
are at the heart
of PwC careers



Opportunities to grow as an individual, to work flexibly, to build lasting relationships and make an impact in a place where people, quality and value mean everything. The skills, insights and connections you develop at PwC are career defining, wherever your career may take you.

Find out more about your opportunities on our website
www.pwc.se/student



The Committees

Sasse consists of eight committees, each with its own area of focus. Every committee has its own history, songs and colors. You will surely take part in several of these committees during your time at SSE.

THE EDUCATION COMMITTEE (UU)	p.38
THE SOCIAL COMMITTEE (SU)	p.44
THE ENTERTAINMENT COMMITTEE (PU)	p.52
THE BUSINESS COMMITTEE (NU)	p.56
THE MEDIA COMMITTEE (MEDU)	p.62
THE TECH COMMITTEE (TECHU)	p.66
THE INTERNATIONAL COMMITTEE (INTU)	p.70
THE SPORTS COMMITTEE (IDU)	p.78



The Education Committee

It feels amazing to finally welcome you to the Stockholm School of Economics and to SASSE! You have a fantastic time in front of you and the Education Committee will always be by your side during your studies here. Because whoever you are, whatever program you will study or which exciting projects you will choose to take part in within SASSE, everything will circulate around education.

To be able to communicate your opinions to relevant members of faculty at school, we collect both course specific and overall feedback on a regular basis. Furthermore we truly appreciate when you turn to us regarding on-going educational matters. Cause we believe change is the only constant!

Welcome to Stockholm School of Economics and to SASSE. I am really looking forward to meeting you in August!

HILDA HARDELL
PRESIDENT OF THE EDUCATION COMMITTEE 19/20



WHY DOES THE EDUCATION COMMITTEE EXIST?

At SSE there are people with diverse backgrounds and interests, unified by a common denominator: our choice of education. We all chose to study at SSE for a reason, which certainly can differ but which probably is in one way or the other related to our desire to receive the best possible education while being here. SASSE provides a broad range of events but the core of our association is the educational coverage, and that is what the Education Committee does.

CLASS AMBASSADOR

As a Class Ambassador you have agreed to be the voice of your class. You are the key link between the students and the teachers. The Class Ambassadors meet a few times each semester to discuss the structure and content of the courses based on the feedback from your class. We deserve the best possible education and the class ambassadors are the superheroes that assures that development is made!

ALUMNI MENTORSHIP PROGRAM

Alumni Mentorship Program is a project that connects the school's alumni and its students in order to exchange experiences and thoughts about life after graduation. Being a student includes meeting new friends and developing skills that will be useful in a future career. However, as a student it can be hard to imagine what a future career could look like – which field to work in, how to combine a prestigious job with a rich social life, weather to work in Sweden or abroad.

MITT LIVS VAL

Mitt Livs Val is a mentorship programme that focuses on integrating young unaccompanied or newly arrived immigrant minors into the Swedish society and education system. Using different pedagogical and mentorship techniques, the programme aims to offer possibilities and support in order to help young adults realise their full potential and pursue higher education. Swedish-speaking students who want to challenge prejudices and gain mentorship experience are able to do so through this project!



TUTOR CENTER

Sharing is caring! SSE is known for its helping and supportive climate and Tutor Center encourage that by arranging tutor sessions for students in different courses. We are always looking for more tutors - contact the Education Committee if you like to join the amazing tutor team!



TEACHER OF THE YEAR

A good teacher can make any subject interesting. A good teacher can inspire a hardcore numbers guy to become a philosopher or a marketing student to love Excel. Hopefully we have all had that special teacher who inspired us to broaden our horizon and go the extra mile. We would like to acknowledge these teachers by organizing the prize Teacher of the year. The winner will both get glory and a big check.



COURSE EVALUATIONS

Course evaluations are the quantitative part of the quality and feedback process. These are sent out to your student email after every finished course and consist of a couple of multiple choice questions. The results from the evaluations are the key to see if there is anything in a course that should be reviewed, but it's just as important to emphasize positive things!



ECONOMICS SOCIETY

The goal of SASSE Economics Society is gathering students sharing a common interest in Economics and seeks to provide a platform for fruitful discussions, out-of-the-box education and career inspiration for Economists. The aim is to open people's eyes to the breadth of topics and career opportunities of Economics.

FOCUS GROUPS

The Focus Groups meet with the Program Manager twice each semester to discuss issues concerning our education. It is a very useful and effective forum to give direct feedback to the program manager regarding actual courses and program structure. The focus groups take place four times a year, and there is one Focus Group for each year of study at the Master Program.



NATIONAL CHAMPIONSHIP IN ECONOMICS

In March every year, students are competing in teams of three to win the qualification to be able to represent SSE in the National Championship in Economics. Your knowledge in everything from economics to accounting will be tested, so make sure that you are a star at most subject. This year, we won our twelfth title in the championships!



The Social Committee

Welcome to the Social Committee: – how nice to see you here! The Social Committee (SU) can be seen as a platform for creativity and various different interests – we make room for all kinds of projects and engagements. We believe that a great social life is a fundamental condition for an amazing time at SSE.

SU consists of three different branches (or "mästerier"): the Culture Branch, the Social Branch and the Festive Branch, as well as two standalone projects, the Introductions and the Master Club. It is within these branches that you find the possibilities and projects for you to either engage in or simply take part of, and we offer everything from paintball and visits to the opera to magical dinners for more than 300 people. SU looks forward to meeting you!

ALICIA OHLSSON

PRESIDENT OF THE SOCIAL COMMITTEE 19/20



CULTURE BRANCH (KULTURMÄSTERIET)

The Culture Branch is SU's hub for creativity where all ideas are welcome. Even though we love culture, the Culture Branch is about so much more than that. Here you find the Debating Society, the DJ Society, SASSE's own band the Music Society, Art Division and a big group of students from Göteborg in the "Göteborg Society". What is most important is that all new ideas – regardless of size (and plausibility) – have a possibility of getting a spot within the Culture Branch.



CULTURE TRIP

Tired of what Stockholm has to offer culturally? Join the Culture Branch for a trip abroad! Last spring we went to Barcelona to visit museums, experience the Gaudi architecture and lovely nature of Barcelona by bicycle and, of course, to enjoy the fantastic Spanish tapas. To travel is also a great way to get to know others and to experience different cultures together!



CULTURE WEEK

This autumn's most exciting week, packed with fun and culture. Previous years we have offered the possibilities of climbing the roofs of Gamla Stan, eating dinner with Magdalena Ribbing, drinking and learning all the traditional drinks and songs of SSE – who knows what will happen this year? Traditionally the Culture Week is completed with one of the biggest parties of the year, the Hwett & Etiquett dinner. Do you want to be part of and help out during the Culture Week, or just want to know more? Do not miss us during the Introduction Week!



LITERATURE SOCIETY

Here you find the most well worth reading description of the Junior Guide. In the Literature Society we believe that culture and particularly books is something you need during your time at SSE. In our Society we talk about books, their authors and anything else that inspire us in the moment as we enjoy snacks and drinks. Do you read much or wish you did? Try hanging out with the Literature Society.

TESTING TUBE

The Testing Tube is for all connoisseurs and hedonists of SSE, or for anyone who is interested in the good life. With noble drinks as focus we try anything that sparks our curiosity. Whatever you would like to try we are here to guide you down the road to beverage heaven.

B-TESTING TUBE

The B-Testing Tube is for less picky SSE Students, or for anyone who is just interested in what hides on Systembolaget's rear shelves. With less noble drinks as focus we try anything that sparks our curiosity. Whatever cheap and flavorful you would like to try, we are here to guide you down the road to the beverage underground.

MUSIC SOCIETY

SSE is crowded with musical talents and the Music Society is where they all gather. Repetitions are held regularly and during the year the members perform at the different parties and dinners. You are most welcome to jam with us regardless of which instrument you play and previous experience! All new forms of musical projects, old as news are encouraged.



INTRODUCTIONS

The other standalone project under SU. As the most appreciated and above all the most fun project at SASSE it is difficult to fully convey how amazing the introduction is. You will get to live it first hand in just a couple of weeks and we could not be more excited to meet you all!



STOCKHOLM STUDENT HEALTH SERVICES

The Social Committee also works with questions regarding mental and physical health. If you during your time at SSE feel stressed or down, we are here for you! We cooperate with the Stockholm Student Health Services (SSHS), who offers free medical and physiological consulting as well as classes about stress. SSHS is perfectly located just a block away from SSE at Norrtullsgatan 2.



FEMINIST SOCIETY

The Feminist Society has SASSEs largest and most active Facebook group where everything that regards feminism or gender is discussed. We are the forefront when it comes to questions about equality and feminism at the school. We pursue this through different activities such as the Equality Week, Feminist Breakfasts and seminars – preferably accompanied with red wine and always with enthusiasm.



INSPIRATION WEEK

Inspiration Week is a reborn project from previous Social Committees – a week packed with inspirational lectures and activities. With a focus on well-being this project is here to remind all SSE students the importance of personal development and health. If you want to feel motivated and inspired (or maybe if you want to motivate and inspire other students as part of the project group) the Inspiration Week is perfect for you!



LGBTQ+ SOCIETY

One of the newer societies of SU. The LGBTQ+ Society organizes socials and meetups for everyone who is interested, but mainly those who identify as LGBTQ+. Swing by for some tea and hang out! Keep an eye on the SASSE Calendar or join the SSE LGBTQ+ group on Facebook.



MASTER CLUB

Master Club, or MC, is the second standalone project within SU. MC is a group of 20 master students who aims to make sure that every master student has their fair share of fun at SSE through fantastic events and parties. The goal is to improve the integration between bachelors and masters in SASSE. During the year, you will experience everything from fun pub-crawls, running cocktails and formal dinners to large incredible parties. We live after the motto "Student Life At Its Best" – something that influences everything we do. Make sure you have an amazing summer, we look forward to meeting you this autumn!



SOCIAL BRANCH (SOCIALMÄSTERIET)

The Social Activities are headed by the Social Master and focuses on making your studies at SSE as easy as possible. We can offer advice, answer questions and facilitate everyday life improvements for all the stressed students during exam periods. Swing by the Social Committee room for a well-deserved break and fika!



FESTIVE BRANCH (FESTMÄSTERIET)

We are the "festisar" of SU. We always try to find new ideas and concepts for each party – the crazier the better. We create possibilities for students to hang out, have fun and party, all at once. Our parties are not always the largest, but they are something we bet you have never experienced before.



HWETT & ETIQUETTE

This incredibly popular banquet (sittning) is the final event of the Culture Week, and you can expect a grande finale. Dress up in your best dress or black tie and make yourself ready for a great dinner with an even more awesome after-party. Let the fun begin!



CLASS DINNERS

Your studies and time at school will be more fun if you know your fellow classmates! This is an opportunity for classes or seminar groups to arrange class dinners to bring the group together and to promote a class unity.



SU AFTER SCHOOL PUB

SU likes to mix the parties with some relaxed hang-outs. Join us in the Pub, grab a drink and bring some buddies. See you there!



YOUR CAREER. YOUR ADVENTURE.



Stockholm School of Economics will give you an excellent education, but your degree will only take you so far.

Take the opportunities you get to develop your leadership and problem solving skills that will be required from you in the complex, global and hyper competitive future business landscape that you will face when graduating.

Accenture Strategy is the strategy consulting practice within Accenture that focuses on helping our clients shaping their strategy, business models and ultimately the future.

We will be here to guide you along the way and we hope to see you in one of our events during your time at SSE.



The Entertainment Committee

Entertainment Committee (PU) organizes what students will remember in 20 years, but have forgotten the day after. Our mission is to enrich YOUR time at SSE with several parties and banquets. PU is the Student Association's oldest committee and was founded as early as 1921.

A tip is to try involve yourself as much as possible in the introduction as you will have the opportunity to meet people that'll be your friends for life. We mix old traditions with new innovation to make sure that you experience the best parties. We organize events such as the Gasque, ZilliZar, the Anniversary feast, Spring Party, the Summer party and much more.

Since 1921, generations of masters and marshals have both organized fantastic parties and partied fantastically. We are a small committee and that generates a strong community. The friends you get through PU are friends for life. Look out for the red overall!

CORNELIA SELLMAN

KLUBBIS (PRESIDENT OF THE ENTERTAINMENT COMMITTEE)

19/20



IFS + GASQUE + ZILLIZ

When you have studied your first months at SSE it's finally time to be perpetuated into the SASSE community. How do you do it? Well, you start by surviving the Gasque weekend. The ceremonial Gasque kicks off the weekend, it's a grand traditional party in our beloved Rotunda! Hold onto the tuxedo bow tie! The most valiant souls then gather at lunch on Sunday to have the party of all parties; ZILLIZ! Cucumber slices in the ceiling and guests from Finland - come join the experience of a lifetime!



SPRING PARTY

When the birds start chirping and the sun is up past four o'clock it is time to welcome the spring in style. Aperol, music, sun and an amazing view. SASSE members takes to a Rooftop bar to officially welcome spring to Stockholm. It doesn't get any better than that. This Rooftop-Party is one you don't want to miss.



THE WINTER BALL

What is the perfect way to conclude an intensive autumn term? Undoubtedly with the SSE Winter Ball! Every year we plan a new perfect way to end the term. This party is full of surprises and you never know what it will look like this time around, so be sure to find out! A banquet, a Rotunda party, a "ful-sittning"? The sky is the limit! Join us this year and to see what we are going to do?



SUMMER PARTY

Exams are over and you have officially survived your first year at SSE! Join the rest of the school as well as lots of other visiting students and attend the legendary Summer Party. Over a thousand people party long into the night to celebrate an upcoming summer of freedom. There will be a huge celebration with artists performing on the stage and other entertainment. When you combine this with summer heat and cold drinks, life can't get much better than that. Going to the Summer Party is the best way to start your summer as SSE student.



THE WEEK OF DEADLY SPASMS

The Roast, the Re-Party, the Friday's Anniversary Feast, which is followed by nothing other than the legendary Zilliz. One weekend, four events. I promise you, this is an experience you won't forget.



OTHER ACTIVITIES

Other than the larger parties, your everyday life at SSE will be filled with smaller but oh so enjoyable festivities. For those who wish, there are more than enough opportunities! Do not worry, you are in safe hands!





The Business Committee

A warm welcome to Stockholm School of Economics and to the Business Committee!

Do you love being inspired by cool companies and amazing people? Are you passionate about creating kick-ass fairs and projects? Would you like to develop on a personal level and learn more about the business community out there? Then the Business Committee is the place for you!

The Business Committee is the link between SSE students and the business community. By offering a broad range of company presentations, career weeks, lectures and parties, the committee functions as a platform for both personal and professional development - there is something for every SSE student. As the intermediate between the companies and SASSE members, the purpose of the Business Committee is to ensure that each student is given the network and information necessary to get the job of their dreams.

Not only will you learn how to cope with companies and get valuable insights for your future, you'll get to attend amazing fairs, banquets and other mind-blowing events. Simply the best of both worlds! See you in August!

ELIN ASHRAFI

PRESIDENT OF THE BUSINESS COMMITTEE 19/20



BC INSPIRATION

BC Inspiration is a branch within the Business Committee aiming to arrange inspirational, educational and hopefully memorable lunch lectures as a complement to all the company presentations. At each lecture, we invite experts within a certain field and the topics are widely spread, ranging from mental health to LinkedIn basics. Make sure you grab a seat early, the events are usually fully booked in under an hour!



ENTREPRENEURSHIP SOCIETY

Are you curious about starting your own company or perhaps working in a startup environment? Then the Entrepreneurship Society is the right place for you! ES is always on the move, working towards helping any and all students interested in entrepreneurship. By organizing inspirational lectures, competitions, workshops, company visits, creative events and projects, we want to inspire more people to try and discover their entrepreneurial side. Many of these events are co-arranged with the school's own incubator SSE Business Lab.



GULDRÄVEN

Guldräven is an entrepreneurial contest arranged annually. The contest is open to anyone who has an idea they are passionate about, and who thinks they have what it takes to execute it best. Selected participants are given the opportunity to pitch their ideas in front of a jury of prominent individuals from the business community. In previous years, the winner has won a membership at the start-up hub Norrskan House in Stockholm, financial advice and coaching from the jury!



WOMEN'S FINANCE DAY

In the middle of September, the majestic oak door of SSE stands open to welcome you to the association's second largest fair, Women's Finance Day. Take the chance to meet people from all sectors within the finance industry and participate in workshops, mock interviews and other events. At the end of the day, you spend a joyful evening at a beautiful banquet together with friends and company representatives. WFD is your first fair at SSE - and you have the great opportunity to participate as a host. Don't miss this!

FESTMÄSTERIET

The Festmästeri is a project very closely tied to the BC Board with the mission to create unforgettable moments for the whole committee and to make sure that the "play hard" in our motto "work hard play hard" isn't forgotten! By maintaining traditions and developing new ones, the Festmästeri brings all the projects within the committee together by hosting spectacular parties in the Rotunda and the annual crayfish party to out in the Swedish archipelago!



STOCKHOLM STUDENT INVESTMENT FUND

Would you like to know more about working at a fund? Then this is the project for you. SSIF is one of the younger projects in the association and there are several ways to get involved. Their primary objective is to provide an educational environment for SSE students to discover and develop a passion for financial markets. Be sure to check it out!



LONDON INVESTMENT BANKING WEEK

Are you curious about the finance industry in London? This trip will take place during the first week of October and will be a good way to interact with some of the worlds biggest banks. The days will contain, among other things, company presentations, workshops and networking sessions. LIBW is a unique opportunity to get a firsthand look into the financial business world.



THE COMPANY GROUP

From September to December, the Business Committee is hosting company presentations. This means that everyday, three times a day, we have different companies here to meet you and talk about their business. Attending company presentations is a great way for you to connect with the business community and future employers. And also, to get free food!



CONSULTING SOCIETY

Are you interested in consulting or simply want to find out if it's something for you? Then Consulting Society is the association for you! With a wide variety of educational and networking events we help you develop your case-solving skills, prepare you for the interview process and the business sector. No previous experience is required, have fun and join us!



WOMEN'S NETWORK

We believe in networking, inspiration and the power in supporting and learning from each other - especially amongst women. That's why we have restarted SASSE Women's Network, an initiative which now have been brought back from previous years. Through various activities, mentorship programmes, panel-debates and much more we hope to push and encourage girls to dare to take more opportunities both inside and outside of SSE.



CATALOGUES

Each year, the BC creates two catalogues: The Internship Catalogue and The Full-time and Part-time Catalogue. These are distributed to all students at the school and are filled with exciting internships and full-time jobs that students can apply for!



MedU

hallvarsson
hallvarsson

The Media Committee

Are you a genius at Photoshop? Or even the next Leibovitz? Or maybe you're like me, a curious amateur? No matter who you are, where you're from or where you're going - The Media Committee (MedU) is for you. Among many other things, we oversee all the communication within the Student Association.

Don't worry about prior experience, we have plenty of students who are more than willing to help you out. On top of that, we provide the opportunity to pursue your interests and develop your talents through several creative workshops. We hope to see you in our committee-room and in the midst of some of our different projects during your time in SASSE and at SSE. Irregardless of that, we'll meet up when you need help with something graphic or when we take your photo during a night in the Rotunda.

Best regards,

WENDELA SPELMANS

PRESIDENT OF THE MEDIA COMMITTEE 19/20



M2 MEDIA MARKETING WEEK

The Media and Marketing Week - M2, is inspiring, creative and gives you the chance to explore your dreams within the field of media and marketing. M2 is a week packed with inspirational and company lectures, all with the common theme: media and marketing.



FOKUS

Mingle pics, portrait shots or a trip to Fotografiska? If you love photography, SASSE Fokus is the right place for you. Take the chance to join one of the most active projects in the association and learn more about photography!



TEDxSSE

For those who do not know, TED Talks is a collection of some of the most inspiring and thought-provoking lectures stemming from the common theme: "Ideas worth spreading." TEDxSSE is SSE's contribution to this fantastic initiative. Every year TEDxSSE hosts the event with inspiring persons and themes. Each year there is a chance for a student to speak, maybe next year it is you? Check out www.ted.com/watch/tedx-talks for a preview!



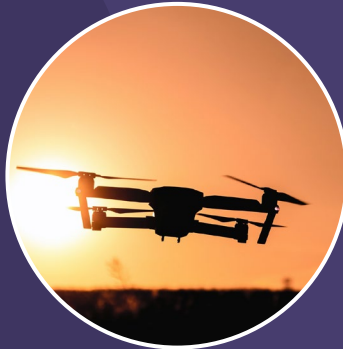
MINIMAX

Minimax is one of the association's proudest projects. In this magazine, you can read all about the happenings at SASSE. The best part with Minimax is that contribution is easy. Whether you are interested in writing, taking pictures or designing - no contribution is too small or large - there is always room for more!



HANDELSTV

The film production team of SASSE! Handels-TV does everything from their own productions to marketing videos for the different projects in the association. Check out the latest videos at www.vimeo.com/mediacommittee. Let your humour and creativity flow freely while working on your editing skills in a project where you set the boundaries for what is possible!



RADIO KAOS

SASSE's own podcast featuring satire, humor and more or less serious discussions on current topics. In Radio Kaos nothing is off limits. You can never be sure on what's next to come so make sure to check it out!





The Tech Committee

The Tech Committee is the hub for the fast development of technology. We're responsible for SASSE's IT environment, which means that we take care of the SASSE website, sasse.se, and make sure that the members within the organisation are working with the technology that fits their work the best. Other than these responsibilities, we arrange tech related events regarding AI, Blockchain, E-sports, coding and tech in different industries.

This year, we're conducting a complete re-branding of the committee where we've changed our name, improved our external image and renovated our room. This is done to reflect the new, exciting and modern image of the tech industry. No matter who you are, we're always thrilled to welcome new faces to our beloved committee.

See you this fall!

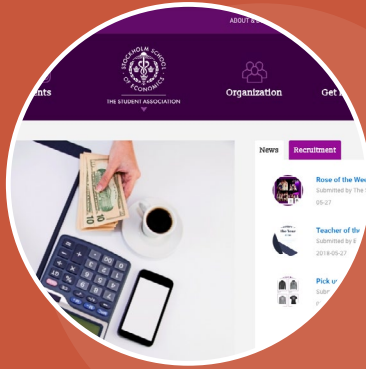
CECILIA TRAN

PRESIDENT OF THE TECH COMMITTEE 19/20



SASSE.SE

The student association's website, sasse.se, is the SSE student's best source of information regarding all projects and activities within the association. The Tech Committee administers and develops the website together with the rest of the organisation. So, if you are interested in website development or web design, we would love to have you on our team!



SASSE BLOCKCHAIN

SASSE Blockchain is established to educate and create open discussion about blockchain and the distributed ledger technology. SASSE Blockchain will be a meeting place for exchanging ideas and applying our knowledge with the development of blockchain projects. People of all background and skill levels are welcome, with an interest and curiosity in blockchain.



LEARN 2 CODE

A project for newcomers who would like to learn about the magic behind today's technology. The educational workshops are held by students with a passionate interest in coding. No previous experience needed!



FASHION X TECH

Are you interested in fashion? Are you curious about the tech industry? Then this is the perfect project for you! This fall we will be hosting our Fashion x Tech event which will be a few days full of inspiring companies with an innovative approach to the traditional fashion industry. The event will be finished with a grand fashion show.



SASSE AI

SASSE AI aims at informing, educating and supporting business and non-technical people grasp what AI is, what it can do, and how to prepare for the economic and societal changes ushered by AI. This is done through workshops and guest lectures.



VR

Apart from our newly renovated room, we have also a newly purchased Oculus Rift (VR glasses). These will be available for you to try if you've ever been curious of doing so. Please reach out to us if you want to try it out.





The International Committee

How exciting that you are going to join us at Sveavägen 65 and the International committee!

We bring the world a little bit closer to SASSE, and SASSE a little bit closer to the world. If you want to explore and embrace different cultures with e.g. midsummer, oktoberfest or Finnish saunas, or if you want to discuss global topics and participate in SMUN. If you want to meet people from all over through language cafés or the exchange committee, or if you want to travel to different countries to explore, for charity or internships. Or maybe you have some other dream you want to fulfill? Regardless of what, we hope our broad range of activities will appeal to you.

No matter who you are or where you're from, we wish you a warm welcome to SASSE and the IntU family!

JOHANNA LI

PRESIDENT OF THE INTERNATIONAL COMMITTEE 19/20



GLOBAL OUTLOOK

Do you want to know more about the possible exchange programs and scholarships at the school? Or are you interested in a career abroad? Be sure to visit IntU's Global Outlook. During these days we arrange a fair with SSE's partner schools and organize lectures and workshops on studying internationally.



EXCHANGE COMMITTEE

The Exchange Committee welcome and take care of all the exchange students arriving to SSE every semester. Through fun events and activities like trips to IKEA and Lapland, crayfish party and Valborg celebration, we ensure that the exchange students get to experience the Swedish culture and make new friends. There is also the possibility of being part of the buddy groups to get to know the exchange students and exchange committee even more. We look forward to meeting you and hope you want to join the Exchange committee!



EUROTOUR

Eurotour is an amazing opportunity if you want to travel to and meet our friends at St Gallen University, Switzerland. You will have two weeks full of fun activities and interesting company presentation in both Sweden and Switzerland, all while getting to spend time with amazing new friends.



STOCKHOLM MODEL UNITED NATIONS

Every november the biggest Model United Nations in Scandinavia takes place! SMUN is held at Stockholm University and is an amazing opportunity to explore what working for the UN would be like. At SMUN SASSE you will practice holding speeches and prepare for participating at SMUN and meeting 200 other delegates from around the world. Regardless of prior experiences and what you want to get out of our workshops, SMUN is a memory for life!

AIESEC

Do you nurture a dream of pursuing an international career? Are you interested in global issues, developing your leadership skills and learning from other cultures? Join AIESEC, the world's largest organization led by students. Take the chance to claim internships or volunteer in 126 different countries and get to know people from all over the world! If you are interested why not start locally, apply to SSE's own AIESEC project group.



INTERNATIONAL WEEK

The international week is dedicated to embrace the wonders of our world. Whether it be discussing global questions, sharing and listening to stories about cultural exchanges and differences, inspiring lectures and workshops for an international career, or embracing different cultures while socializing, this week has it. Maybe you want to join us to create this week?



DER VEREIN

Der Verein is SASSE's biggest and most noble nation society. Regardless if you don't know a word of German or if you are born and bred on the green plains of Germany, there is something for everyone in Der Verein! Together we create memories for life with lots of bratwurst, lederhosen and bavarian beer. Make sure not to miss the Oktoberfest and to join our annual trip to Berlin, two of many highlights of the year! Herzlich Willkommen!

FINNISH ASSOCIATION

Saunas, Mumin and the ferry to Finland, there are countless things the land of lakes has to offer. Regardless of whether you have family from Finland or if you are just curious of how Finnish culture works, you are more than welcome at our evenings in the sauna and other cozy events. Come hang with us!



CHINESE ASSOCIATION

Do you enjoy dumplings, kung-fu and fengshui? Or do you really want to know what those words mean? Then the Chinese Association is something worth checking out! We want to spread the fantastic Chinese culture and show SSE students the wonders of the world's largest country. Regardless of if you have limited knowledge or see yourself as a China expert you are welcome! Huan yin!

CANADIAN ASSOCIATION

Are you interested in Canadian culture? Do you want to learn more about Toronto, Quebec, Montreal, and Vancouver? Do you want to explore the most intimate secrets of the great white north? Then the Canadian Association may not be the association for you. Contrary to popular belief, that is not what we do. If you want to explore cultures there are, however, a plethora of other great Regional Associations for you. Nonetheless, we encourage you to join us! No previous knowledge is required.

HEBREW ASSOCIATION

Do you want to learn an antique culture in a relaxed and engaging environment? In the Hebrew Society you can experience the best in jewish tradition and Hebrew culture; everything from shabbat dinners to lessons in Hebrew or just socializing over falafel and hummus. You don't need any jewish heritage or knowledge of Hebrew, everybody is welcome! Baruch haba!

AMERICAN ASSOCIATION

Would you like your time at SSE to be just like an American Pie movie? Then this is the place for you! The American Society is passionate about American culture and tradition, we arrange the legendary Thanksgiving banquet, beer-pong tournaments and much more! We also have partnerships with exchange students from top universities in the US and arrange social activities for you to join. Do you long after the College experience or want to learn more about corporate America? Bring it on!



L'ASSOCIATION FRANÇAISE

Bienvenu à L'Association, your escape when you long for baguettes and a more cultured discussion. To the tone of Edith Piaf from an old stereo we will take you right to the corner café in Marais. Come take part or help organise everything from French lessons and wine tasting to extravagant banquets in true renaissance spirit. All you need is an interest in all things French!



BRITISH ASSOCIATION

Success is not final, failure is not fatal: it is the courage to continue that counts. Brexit may change a lot but our love for the British Isles is as strong as ever! Come enjoy afternoon tea, Premier League, Sherlock Holmes classics and pub crawls. Alternatively, you can explore the possible careers and education opportunities in Britain. We promise obscene amounts of tea and scones, welcome!



LANGUAGE CAFÉ

Want to brush up on the language skills you acquired in school or on that backpacking trip you once did? Are you a fluent speaker in a foreign language and wish to get to know other SSE students, socialize and/or help them develop their skills in your beloved mother tongue?

Join us at the Intu language café for some international encounters! Different languages every session!

REGIONAL ASSOCIATION

Do you feel like something's missing. Do you have your own culture, country or international experience that you want to share and arrange? Then you can start it up and find people who share the same interests as you.

Welcome to Stockholm School of Economics!

We also started here.

At Deloitte we have several co-workers who can look back on a wonderful time as a student at Handels. We hope that you will have as inspiring and educational years as we had and that you make sure to get the most out of your student period. To start with – find us at the Deloitte Olympiad 21th of August!

We look forward to meeting you on our student activities and recruitment days in the future.



Julia Swartling
*Audit assistant,
Graduated 2018*

The experience as a student at Handels is incredibly developing – especially in the terms of knowledge through the opportunity to develop within a number of different subjects that provide a good basis for the professional life. The years at Handels are tough but provides fantastic opportunities, close friends and a really fun journey.



Lotta Vartola
*Analyst,
Graduated 2018*

Handels is a melting pot between academia and business life, between theory and practice. It provides you with a set of tools applicable to anything that comes on your path. Use your student time to explore various things and ask many, many questions – that's a habit you'll find useful later on as well!



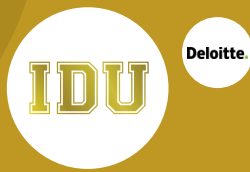
Hedvig Jonzon
*Advisor,
Graduated 2010*

My years at Handels were wonderful, especially thanks to all fantastic and ambitious people I met there! My favourite part were the projects within the student association as well as all the school work in groups with focus on teamwork – that experience is of great importance to me today!

What impact will you make?

deloitte.se

Deloitte.



The Sports Committee

The home of all sports enthusiasts – no matter if you love playing sports, watching them, or might want to work within the Sports Business industry – the Sports Committee is the right place for you!

We offer a diversified portfolio of weekly practices, such as football, tennis and cheerleading. Several times a year, we represent SSE at international and national tournaments. We also arrange the Ski Trip, sports pubs and a Sports & Business Day. You can read more about all our activities below, and if you feel like something's missing you can start your own sport or project. Make sure to follow our social media channels so you don't miss out. Facebook: The Sports Committee (IdU). Instagram: thesportscommittee.

Mens sana in corpore sano – A healthy mind in a healthy body!

KATARINA BOTTELLI DAHLGREN
PRESIDENT OF THE SPORTS COMMITTEE



FOOTBALL TEAM (ASSETS)

Everyone is welcome to come and practice, it does not matter whether you have played at an elite level or just at home in the backyard, the more the merrier! We share sweat, laughter and even tears of joy after taking home the gold in Koblenz and in Maastricht. Find more information about us at the Facebook page: SASSE Football. See you on the field!



CHEERLEADING TEAM (SHARKS)

SASSE Cheerleading is considered to be one of the best cheerleading teams among business schools in Europe and have won many trophies over the years. We perform at games, events and compete in international tournaments twice a year! Everyone is welcome and no previous experience is needed. Find more information about us at the Facebook page: SASSE Cheerleading. We look forward to be practicing, performing and travelling with you!

VOLLEYBALL TEAM

We are a great team with a nice mix of people from different years and with different athletic level. We meet once a week to play some ball and OF COURSE you are welcome! Find more information about us at the Facebook page: SASSE Volleyball Club.



BASKETBALL TEAM

Currently the best business school basketball team in Europe! We are a mixed group of women and men who play basketball together once a week. Some of us have played before, but we gladly welcome all new players; from beginners to more skilled players – you are all wanted! Find more information about us at the Facebook page: SASSE Basketball Team. Swing by and join us!



RUNNING SOCIETY

Marathons, ultras or barely around the block? No matter how much you have run before; you can join SASSE Runners. We meet regularly to run together and we encourage every kind of runner to join. We run for fun and we make sure to adapt the training to the attending runners. Find more information about us at the Facebook page: SASSE Runners!



GOLF SOCIETY

Regardless if you've won fourteen majors or if you're just starting out, everyone is welcome to join our society. We are a group of SSE students who are passionate, or maybe just interested, in the great game of golf.



TENNIS SOCIETY

If you are interested in tennis you should definitely join us! All levels are super welcome and you'll find beginners to (almost) professional players on court having a blast of fun on court every week! Join us and read more at the Facebook page: SASSE Tennis!



BADMINTON SOCIETY

Skip Wednesdays at Café Opera, come and play badminton instead! Every Wednesday night we gather for an hour of blood, sweat and fun at the Frescati hall. If there is an interest, we also provide the opportunity to go to competitions and tournaments. Find more information about us at the Facebook page: SASSE Badminton. Looking forward to seeing you this fall!



TOUGH VIKING SOCIETY

A thousand years ago a people came from the north and conquered the world. Sailing in longboats they came with iron, fire and blood to take whatever they desired. We're pretty peaceful in comparison but if you've ever wanted to push yourself to your physical limit this is the perfect opportunity! We're a group of students who together practice for and run the challenging Tough Viking race as a team! Find more information about us on: Facebook: SASSE Tough Viking Instagram: sassetoughviking

AMERICAN FOOTBALL TEAM (TRADERS)

Like a tough and fun challenge? Then Handels Traders is your new family. Here you can try American football at a level that suits everybody! So if you want to fight for SASSE just like in Sunday Night Football, do not hesitate to join us! Find more information about us at the Facebook page: Handels Traders.



SPORTS AND BUSINESS DAY

Dreaming of working at FIFA, the Olympic Committee or for your favorite football team's headquarters? Together with SSE Center for Sports & Business, we host a career fair with opportunities within the national and international sports business. Swing by and learn more!



SKI COMMITTEE

Powdery off-pist or partying at La Folie Douce? No matter if you prefer lactic acid in your thighs or chilling at the après ski, the annual ski trip is a must! Not a ski fan? You're still very welcome to the legendary Ski Pub in collaboration with the Entertainment Committee: a night you don't want to miss out on!

SASSE WORLD CUP

Do you get nostalgic about the sports tournaments from your childhood? Fear not, SASSE WorldCup will give you the chance to build your own team, compete against your friends and hang out in the sun.

FLOORBALL TEAM

If you like to play floorball, now you know what you will be doing Monday nights from now on. We are a great group of people who meet once a week to play. Find more information about us at the Facebook page: SASSE Floorball. Everyone is welcome and you will experience the best a Monday night has to offer! You might also get the chance to represent us at Studentiaden (Students Swedish Championships)!



THE STUDENT ASSOCIATION

The Projects

Apart from the committees there are a few standalone projects within SASSE which thousands of students have been involved in throughout the years..

HANDELSDAGARNA

p.86

SSE NURSERY

p.88

THE STUDENT FARCE HANDELSSEXET

p.90

FRIEDMANS APOSTLAR

p.92



Handelsdagarna

First and foremost, congratulations and a warm welcome to SSE and SASSE - you have some fantastic years ahead of you!

Handelsdagarna has been the obvious meeting point for students and companies since 1983, and it has since then helped students establish new contacts, make dreams come through and form friendships lasting a lifetime.

Handelsdagarna is SASSE's biggest annual project, and it truly is a project that has a role for everyone. You will get the chance to try new and perhaps previously unexplored roles, gain valuable experience and most importantly be a part of a project that will really make a difference and create lifelong memories for all students at SSE.

Once again, congratulations! We're really looking forward to welcoming you to the HD family!

THE COMMITTEE OF HANDELSDAGARNA 2020





SSE Nursery

Educating yourself at SSE is tradition in many families. From a young age parents inspire their kids by placing them at, what has for decades been nicknamed, the SSE Nursery. The pre-school is situated just behind SSE and every year accepts 5-15 children who at an early stage are prepared for what is to come. Between fun and games they are taught basic economic terms and the do's and don'ts of a banquet. It is therefore important for us SSE-students to act as role models for the children. Be sure to always greet them, and if you can, take time to play with the kids during breaks between lectures!





The Student Farce

Imagine 550 people in the audience, all of them being your fellow classmates at SSE. The atmosphere in the theatre is insane as you make your way up on stage. You are now part of one of the largest and oldest projects within SASSE - Handelsspexet.

Handelsspexet is not an ordinary play. It is a play that brings together elements of musical, comedy, dance performance and so much more into one incredible show made by the fantastic members of SASSE. Also, instead of nodding your head for hours in boredom as you may do at a regular theatre, at Handelsspexet you interact with the actors by shouting out commands on how the actors should act on stage. For example: "Act drunk!", "In German!" and "The stage is leaning!".

The spex-year starts in the spring, when the Spexgeneral (the project leader) and a brave group of scriptwriters sits down to kick off their long and amazing creative journey. During the fall semester the other people in the Spex are recruited: everyone from actors, film creators, sales and marketing people and many more. No matter if you are an amateur carpenter, a fashionista, a fantastic sponsorship finder or if just love acting your heart out on stage - everybody has a chance to find their place in Handelsspexet. So, as long as you can find the joy in endless all-nighters with amazing friends, this is a perfect project for you.

ADAM LANDBERG
SPEXGENERAL 2019





Friedmans Apostlar

Friedmans Apostlar is the student choir at the Stockholm School of Economics. As a friedmanning (member) you'll partake in sweet gigs, parties, the archipelago choir weekend and the legendary Fridde-resa (choir trip). We have students from all years and programs as most stay several years, this strengthens cohesion and brings our proud history closer.

Our main gigs are performances at SSE graduation ceremonies, for the Nobel Laureates, Lucia at cool companies (like Google & Spotify) and our Spring and Christmas concerts. This is how we finance our epic Fridde-resa each spring; past destinations include Istanbul and Montenegro. This fall we celebrate our 30th anniversary with a magnificent banquet, which makes this year extra special!

No previous experience of any kind needed (not even Swedish) – just turn up for our open rehearsals, early September!

Welcome to SSE!
Hic enim latine

ERIK, HANNES, LOUISE & FRANZ JAKOB
BOARD OF FRIEDMANS APOSTLAR



← scan it!

Your guide to a sittning

During your coming years at SSE you will encounter several magical banquets and other festive occasions. To prepare you for what is to come and what to expect we have made a little guide.

TIME

The first step of a successful party is being on time. Is the time set to "19:00" that means you should be there by 19:15 at the latest. Does it on the other hand say "19:00 sharp" it means that this time is to be followed exactly. Banquets usually last for about 3 hours and are usually followed by an afterparty.

FOOD AND DRINK

At some banquets there is a set menu such as at Märten Gås where you will be served black soup. There is always a vegetarian and vegan option. When pre drinks are served it is often something carbonated and is consumed with the other guests before taking your seat. During the dinner wine or alcohol free alternatives are usually served.

ATTIRE

Dresscode varies depending on the type of banquet and event. On the so called "fulsittningar" it is usually a theme (e.g. Disney, sports, countries...), but on more formal banquets the dresscode is often black tie (tuxedo or evening gown).

TOASTS

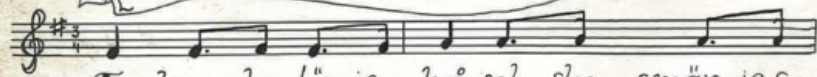
Where there is drink, there should of course be toasting. Toasting may be seen as a trivial detail but there are some rules that should be considered. Always toast with those seated closest to you and don't forget to keep eye contact with the person you are toasting with.

SONGS

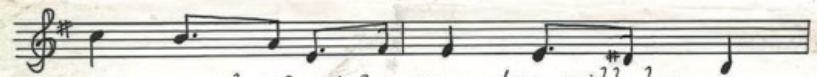
No banquet without songs. All sittningar are initiated with "Handels Lov", which you can practice on the next page. Learn it, you will need it! You also sing a lot of other songs, all of them are found in the leaflets placed on your seat at each banquet.

HANDELS LOV

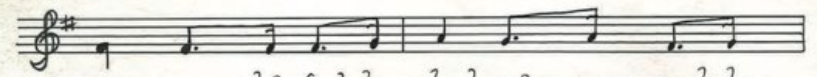
Melodi: Värmdar friska



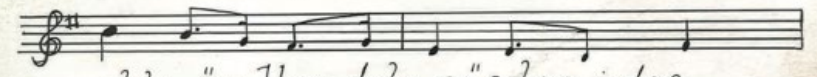
Fes-ten ska bör-ja, krå-set ska smör-jas,



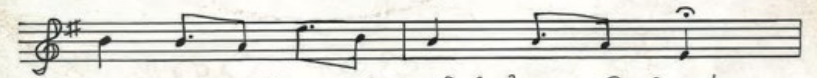
magen ska få det som den vill ha.



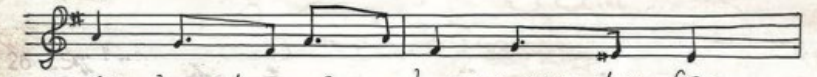
Gla-sen stå ful-la, låt sång-en rul-la,



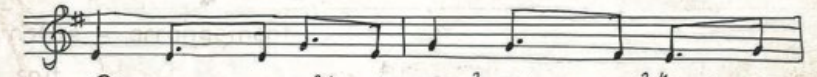
al-la är Han-dels gäs-ter i-dag.



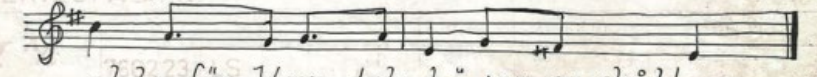
Gla-set i han-den fat-tom: Gutär!



He-lan den går och ma-gen den får.



Sor-ger-na glöm-mes, gla-sen nu tøm-mes,



al-la för Han-dels hö-jer en skål!

Sasse Dictionary

AKADEMISK KVART *noun* traditional tardiness, does not apply at exams. Often gets longer over the years and is highly seasonal.

ATRIUM *noun* spacious area where most lecture breaks are spent and where studying commonly is practiced.

AULA *noun* the main lecture hall. In a comfortable atmosphere and with leg space rivaling a Boeing 700 you will try to see what the professor is writing to the clicking of 300 multi-coloured pens.

BLANKA (*blankade, blankat*) *verb* to refrain from handing in an exam.

CFR (*acronym for Center for Retailing*) *noun* SSE's premises on Saltmätargatan

DÖDSRYCK *noun* SASSE's final week before a new year when the newly elected assume their posts and those leaving are celebrated properly.

ENOK *noun (1)* toilet in the basement, *(2)* male SSE student that has survived the Gasque

ENOKSRO *noun* SASSE's own summer house.

ENOKA *noun (1)* toilet in the basement. *(2)* female SSE student who has survived the Gasque.

HENOK *noun* gender neutral term for an SSE student who has survived the Gasque.

EXCELKURSEN *noun* Late nights in the pc-labs and mental breakdowns. Highly unclear student benefit.

FINLANDSFÄRJA *verb* common team building exercise, clearly high student benefit

FULDANS *noun* dancing like nobody is watching, because come on, who is?

FUM (*short for kärfullmäktige*) *noun* SASSE's strategic decision-making authority (compr. parliament) consisting of 13 elected members.

FÖRETAGSPRESENTATION *noun* presentation by a company about their operations. Held by companies interested in hiring you.

FÖRETAGSREP *noun* the employees of the companies visiting the school. It pays off to be nice to these people.

FÖRFEST *noun* a party before a "sittning" or night at Stures. Plans are made, romantic looks are exchanged and last minute costume adjustments are made.

GASQUE *noun* a sittning with a following after party that marks the end of your time as småtting and your first exam period.

GC (*acronym for Global Challenges*) *noun* mandatory course about global issues

for BE students during the first two years at SSE.

GPA (*acronym for Grade Point Average*) *noun* your average performance at university.

HANDELS LOV *noun* The first song at all sittningar. Mandatory knowledge for all SSE students.

HANKEN *noun* our Finnish counterpart that often come to visit during special occasions.

HETS (*pl. -en*) *noun* what did you get on the exam? Do you have a summer internship? Oh you take double degrees? How much do employers care about grades? Don't let the hets get to you, you do you.

LYCKEBORG *person* you will discover who he is and you will not forget him.

INSKRIVNINGSNUMMER *noun* your personal student number that you are assigned on your first day at handels.

INSPRING *noun* short advertisement break by students during lectures.

KLUBBRUM *noun* group rooms at CFR available for RM students. BE students are very jealous

KOPPARPORT *noun* door to the association premises from Kungstengsgatan. Used when getting between Sveavägen 65 and Saltmätargatan.

KÄR (*kåren*) Swedish for the student association (see SASSE).

KÄRIDOR *noun* SASSE's highway, the corridor connecting all of the committee rooms on Sveavägen

KÄRPOÅNG *noun* motivates us all, but nobody really knows what they are or what they are used for.

KÄRRÄV *noun* a student that is convinced their career begins in the basement of the school.

KÄRSTYRELSE *noun* the student association's executive body that consists of the committee presidents and the presidium. Can often be seen hanging around school in purple overalls.

OBSAN *noun* picturesque and flourishing park behind the school. Short for observatorielunden.

OMFEST *noun* party, again. Takes place during the week of deadly spasms.

OMSTART *noun* start, again. Is yelled out by the audience during the famous handelsspex.

OMTENTA *noun* re-exam. If you didn't pass an exam this is a chance for you to write it again.

PATET *noun* previous officials within the student association, beware hubris lasts forever...

PORTAL *noun* the school's intranet. Here you will find information from the school

as well as from your professors. portal.hhs.se

PUB *noun (1)* a large room in the school basement. Used for studying and eating lunch during the day, and socializing and dancing during the night (see fuldans) *(2)* the name of some parties held in above-mentioned room.

RAGNAR/TORSTEN *noun* lecture halls, not people.

ROTUNDA *noun* a circular, legendary space located under the main lecture hall. Hosts many of the best parties at SASSE.

RÅDMANSGATAN *noun* metro station on the green line right outside the school's premises on Sveavägen.

SASSE (short for Student Association at the Stockholm School of Economics) *noun* "kåren" in English.

SITTNING *noun* a banquet where food is mixed with drinks and song. Usually followed by dancing all night long.

SMÅTTING *noun* a state of being until you have survived your first exam period and the following gasque (see gasque).

SOMMARFEST *noun* a thousand people partying until dawn during a long and magical night in June. Exams are over and so is your first year.

SPEX *noun* unforgettable theatre performance by students. Comes in two

versions; småtting- and handelsspex. spons *noun* products given to students by companies. Remember to recycle...

SPSS (*short for Statistical Product and Service Solutions*) *noun* a statistics program frequently used by students. Definitely not user-friendly.

STATATA *noun* another statistics program used by students. Somehow, even less user-friendly than SPSS.

STORA SALEN *noun* a big hall at Holländargatan, located above Saltmätargatan. Here you will experience the biggest contrasts at Handels, from stressful exams to amazingly spectacular sittningar. (see sittning)

STRANNIS *person* nickname for the school's principal Lars Strannegård.

STUDENTPALATSET *noun* a building filled with study spaces great for exam studies or group projects. Closely located to SSE. This is also where The Stockholm Student Health Services are located.

TENTAMEN *noun* a written exam you have to pass in order to officially complete a course.

ZILLIZ (*pl. -en*) *noun* cucumbers in the ceiling, hats, herring, lunch, singing and plenty of partying.

Packing List

- Rotunda-shoes**
When dancing on SASSE's infamous dancefloor you want a pair of comfortable shoes you don't care too much about.
- Coffee thermos**
When energy levels drop, coffee is your best friend.
- Waterbottle**
It's not coffee, but it keeps you hydrated!
- Cozy hoodies**
During exam periods you do not want uncomfortable clothes...
- A warm winter jacket**
It does get chilly in Stockholm during the winter.
- No calculator**
(Thank you Bain&Co!)
- A sturdy bag**
Some books are quite heavy...
- Nice clothes**
Some of the banquets at SSE have a more formal dress code, some are black-tie (tuxedo/evening gown). So make sure to bring your favorite clothes if you want to dress up!

Course Literature

Where do you buy the books?

Books can be newly bought both online and in bookstores. However, the most common method is buying them off students who took the course last year. For this you can use SASSE Bookswap through sasse.se.

When do you need to buy the books?

Some people buy the books far in advance while others stressfully get ahold of them in the middle of the course.

Do you need to buy the books?

It is always up to you whether you want to buy the books or not. The books are available to loan and often a lot of the material is accessible online. How important it is to have the book varies between courses.

Follow us on Instagram!

@smattingintro2019

The SASSE website

WWW.SASSE.SE

As soon as you've become a member of SASSE, you get access to sasse.se, which is sasse's own website. Besides information, this is where you'll find recruitments within the association, schedules, the student paper Minimax and signups to all the events and company presentations.

Facebook Tips

Join Your Program's Facebook Group!

Smättingintro Retail Management 2019

or

Smättingintro Business & Economics 2019

Like the Intro's Page

Smättingintro 2019

Become Friends with Smätting Intro

Like the Student Association's Page

The Student Association at the Stockholm School of Economics

Join your "Sharing is Caring group"

BE: Sharing is Caring 2019
RM: Sharing is Caring-RM 2019

Join "SASSE Members"

Matilda Ljunglöf

Stormamma RM
+46737548340

Tova Geiger

Stormamma BE
+46730372414

Erik Olivecrona

Storpappa BE
+46708310391

Hannes Hellmér

Storpappa RM
+46738154666



**We can't wait
to see you!**

