



STOCKHOLM SCHOOL OF ECONOMICS

A LEADING BUSINESS SCHOOL

The Stockholm School of Economics (SSE) is the leading business school in Northern Europe. SSE has educated talented women and men for leading positions within the business community and the public sector since 1909.

Our school has earned a reputation for excellence, both in Sweden and around the world.

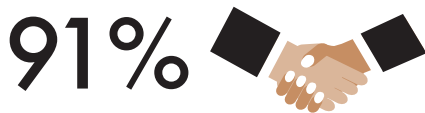
A small school with a big impact

Our school is relatively small, with only about 1800 students, which creates close ties between students, faculty, and staff. Classes are small and faculty are highly accessible. Teaching includes interactive case studies. The more real things get, the more you learn.



Graduates making a difference

Graduates from SSE make a difference. Among board members at the top 30 companies at the Stockholm Stock Exchange (Nasdaq OMX), a total of 27% are graduates from SSE, and 41% of the female board members are graduates from SSE.



Valuable connections

We work in close cooperation with the business community, which make a strong impact on the education. Real problems and solutions are used in class, and we make sure our students get what the employers are looking for. Our more than 100 partner companies provide plenty of opportunities to make valuable connections from day one. We also house the SSE Business Lab, a world-class business incubator. Our survey of 2013 Master graduates found that 91% found employment within 3 months of completing their studies.

International top school

We are an international school based in central Stockholm, known as one of the world's most beautiful cities with a bustling start-up scene. Many of our students and staff have an international background.



Partners and memberships

We collaborate with top schools all over the world, are members of the prestigious CEMS network, and are accredited by EQUIS (European Quality Improvement System), which means that all programs and research are regarded to be of the highest international standard.



RANKING

Financial Times ranking

For the past eight years, SSE has been ranked as the number one business school in the Nordic countries by the Financial Times.



PROGRAM PORTFOLIO

We offer highly regarded bachelor's, master's and doctoral degree programs along with an executive MBA program and executive education.

BSc	Business & Economics
	Retail Management
MSc	Accounting & Financial Management
	Business & Management
	Economics
	Finance
	International Business
PhD	Business Administration
	Economics
	Finance
EXECUTIVE MBA PROGRAM	EXECUTIVE EDUCATION

FACTS AND FIGURES

Number of students: about 1800

Number of employees: about 250

Organisation: 6 departments, 8 research institutes, 14 research centers.

Partners and memberships

68 Partner Universities, member of APSIA, CEMS, PIM and PRME.

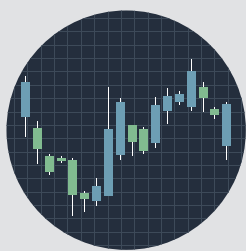
Partner companies

About 100 partner companies in the Corporate Partnership Program.

Research collaboration with 200 international universities in 40 countries and with 200 companies, public agencies and non-academic institutions.

A privately owned business school that receives its financing from private sources. Less than 20% of the financing is received from the Swedish government.

Founded by the business community more than hundred years ago.



RESEARCH

SSE is known for a close relationship between research and education. Our research is internationally recognized and many of our researchers are among the leading figures in

their respective fields. We conduct research in economics, finance, business administration and related disciplines.

CONTACT US

For questions about admission:

admission@hhs.se or +46 8 736 90 00

For all other questions:

info@hhs.se or +46 8 736 90 00

More information can be found on www.hhs.se